

# THE GALLERY AT BEACH PLACE

## FORT LAUDERDALE, FL



THOR  
EQUITIES

WWW.THOREQUITIES.COM



### FEATURES

<b>TOTAL SF</b>	<b>26,738 SF</b>
<b>GROUND FLOOR:</b>	<b>5,142 SF</b>
<b>SECOND FLOOR:</b>	<b>6,912 SF</b>
<b>THIRD FLOOR:</b>	<b>14,684 SF</b>

#### HIGHLIGHTS

- TYPE: RETAIL
- TOTAL SF: 26,738 SF
- MARKET: FORT LAUDERDALE

### ABOUT THIS PROPERTY

**UNPARALLELED LOCATION:** The Gallery at Beach Place is surrounded by all of the major tourist attractions in Fort Lauderdale, one of the most popular beach cities in southern Florida.

**HEAVILY TRAFFICKED SHOPPING DISTRICT:** Fort Lauderdale features beautiful beaches, historical landmarks, and numerous arts and entertainment venues. Some of the most popular destinations in the city include Port Everglades, Las Olas Boulevard, Millionaires Row, and the Riverwalk. The Beach Place shopping center is located on the beach, and is regularly frequented by guests of the adjacent Marriott BeachPlace Towers.

**EXCELLENT RETAIL OPPORTUNITY:** Beach Place is situated directly on Route A1A, the primary thoroughfare along Fort Lauderdale Beach. Traffic counts on Route A1A are approximately 40,000 vehicles per day.



# THE GALLERY AT BEACH PLACE

## FORT LAUDERDALE, FL



THOR  
EQUITIES

WWW.THOREQUITIES.COM



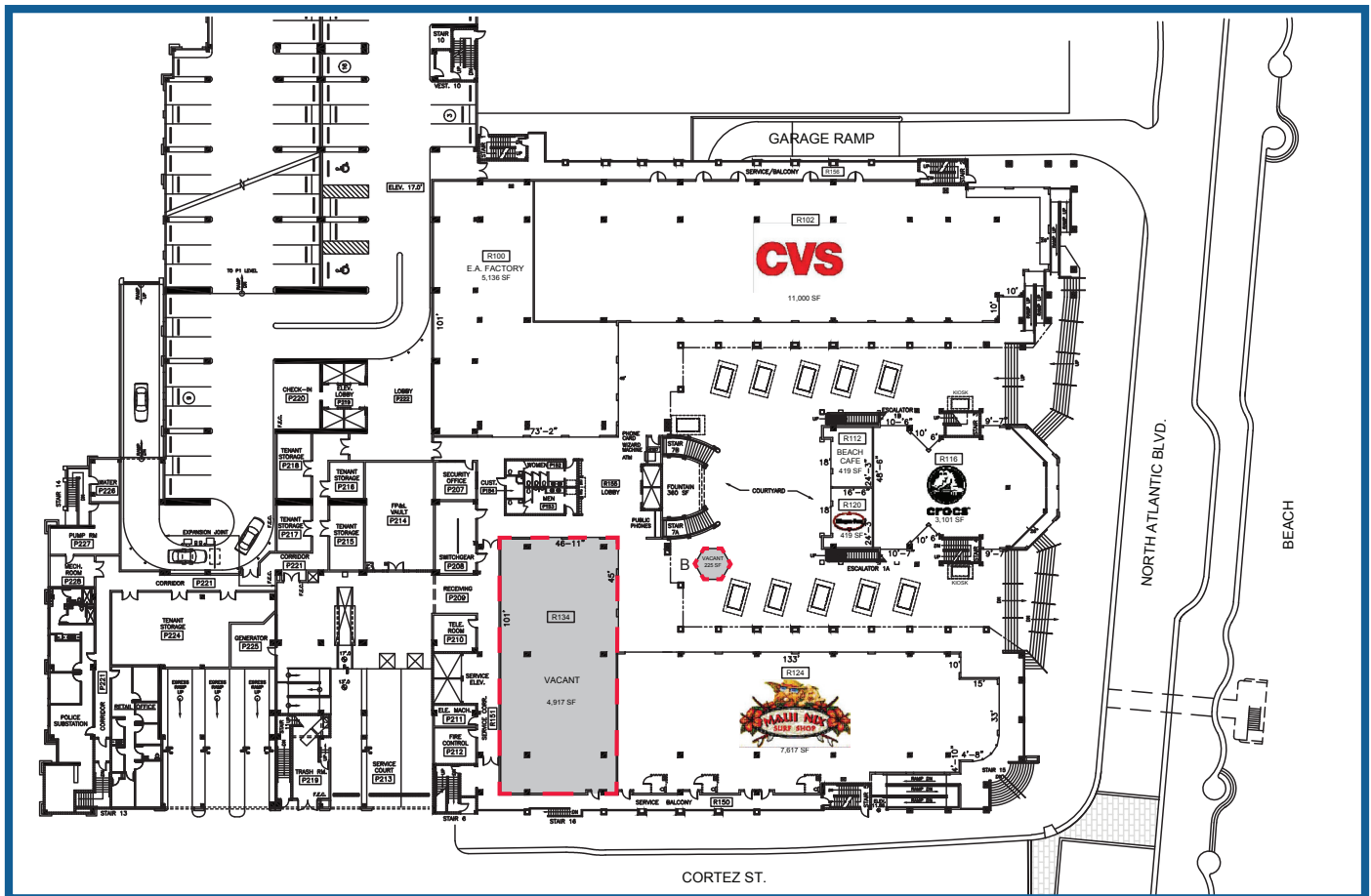
25 West 39th Street New York, NY 10018  
Phone (212) 529-5055 FAX (212) 460-5362



# THE GALLERY AT BEACH PLACE

## FORT LAUDERDALE, FL

TOTAL SF	5,142 SF
SPACE R134:	4,917 SF
SPACE B:	225 SF



GROUND FLOOR



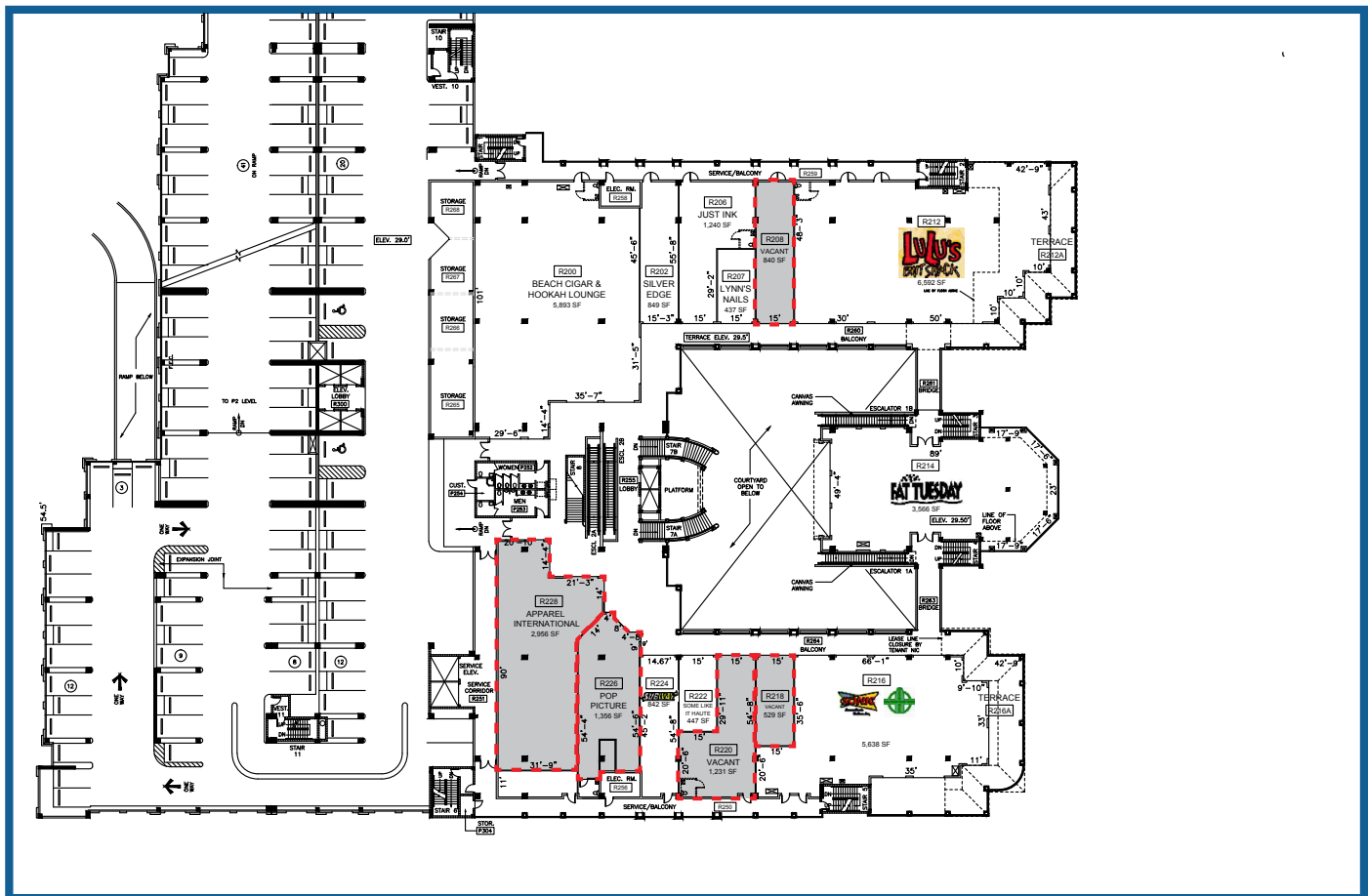
# THE GALLERY AT BEACH PLACE

## FORT LAUDERDALE, FL



**THOR  
EQUITIES**  
WWW.THOREQUITIES.COM

<b>TOTAL SF</b>	<b>6,912 SF</b>
<b>SPACE R208:</b>	<b>840 SF</b>
<b>SPACE R218:</b>	<b>529 SF</b>
<b>SPACE R220:</b>	<b>1,231 SF</b>
<b>SPACE R226:</b>	<b>1,356 SF</b>
<b>SPACE R228:</b>	<b>2,956 SF</b>



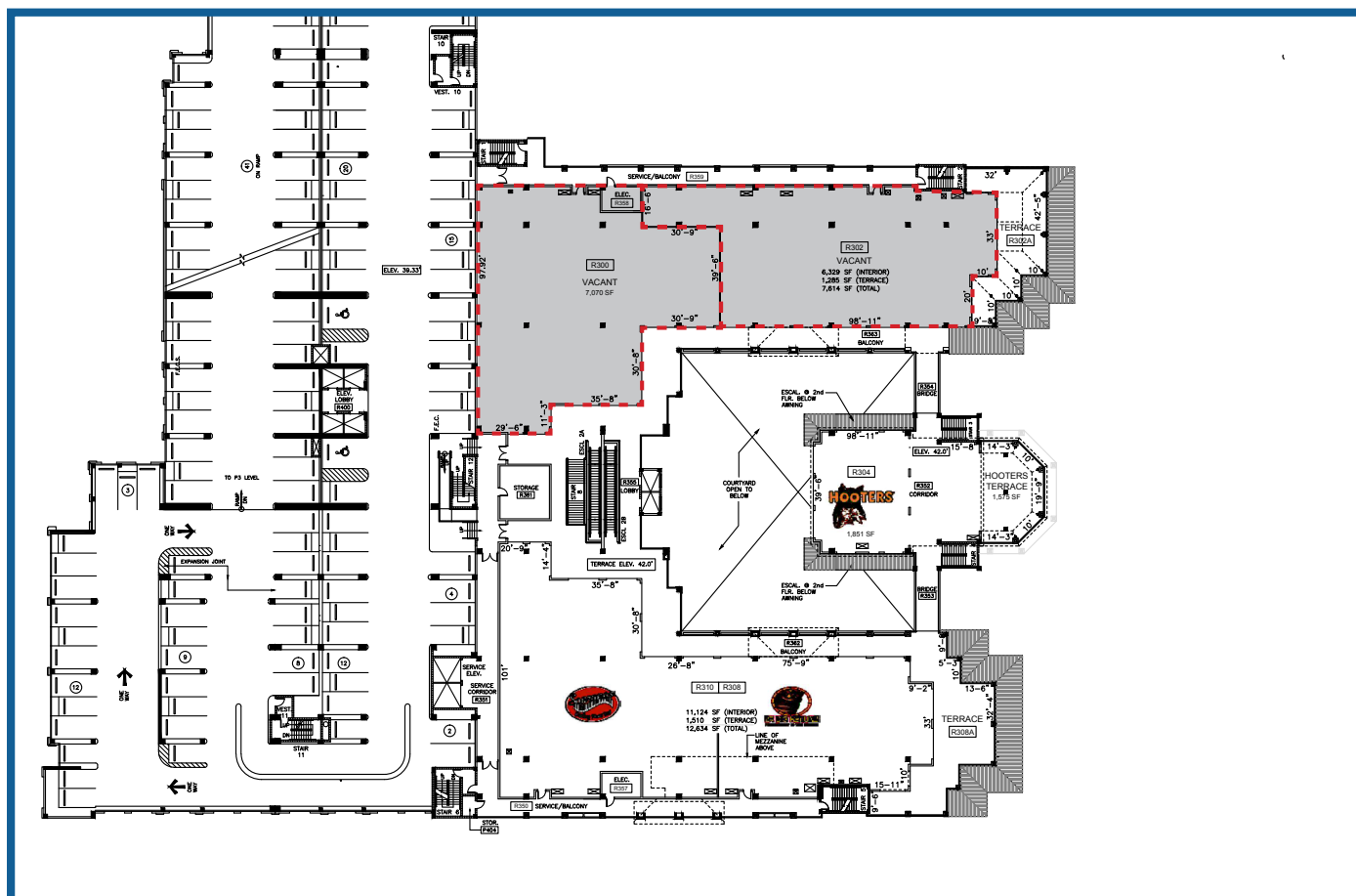
**SECOND FLOOR**



# THE GALLERY AT BEACH PLACE

## FORT LAUDERDALE, FL

<b>TOTAL SF</b>	<b>14,684 SF</b>
<b>SPACE R300:</b>	<b>7,070 SF</b>
<b>SPACE R302:</b>	<b>7,614 SF</b>



**THIRD FLOOR**

Although all information furnished regarding this property is from sources deemed reliable, such information has not been verified, and no express representation is made nor is any to be implied as to the accuracy thereof and it is submitted subject to error, omissions, change of price, rental or other conditions, prior sale, lease or financing, or withdrawal without notice.