

68 WASHINGTON AVENUE BROOKLYN



FEATURES

TOTAL SF	3,000SF
GROUND FLOOR:	2,000SF
LOWER LEVEL:	800SF
OUTDOOR PATIO:	200 SF

FRONTAGE	
MERCER STREET	30'

- HIGHLIGHTS**
- TYPE: RETAIL
 - TOTAL SF: 3,000SF
 - MARKET: BROOKLYN

ABOUT THIS PROPERTY

UNPARALLELED LOCATION: Situated in the heart of Clinton Hill, one of the most trendy and eclectic areas of Brooklyn, 68 Washington Ave. is a prime retail opportunity. In close proximity to Downtown Manhattan, the area has revealed in an influx of major retailers in recent years, prompted by unprecedented residential growth.

HIGH-DENSITY TRADE AREA: Brooklyn is exploding with opportunity for retailers. With a fast commute from Manhattan, this area of Brooklyn has become a destination offering the best for any New Yorker or tourist alike. Perfectly situated near the Brooklyn-Queens Expressway, the Clinton-Washington Avenues subway station and the Franklin Street subway station, 68 Washington Ave. promises tremendous exposure.

EXCELLENT RETAIL OPPORTUNITY: The ground and lower level of 68 Washington Ave. are perfectly designed for paramount retail space. With 2,000 SF on the ground, 800 SF on the lower level, and a 200 SF rear yard, 68 Washington Ave. is poised for retail success in this trendy and bustling neighborhood.

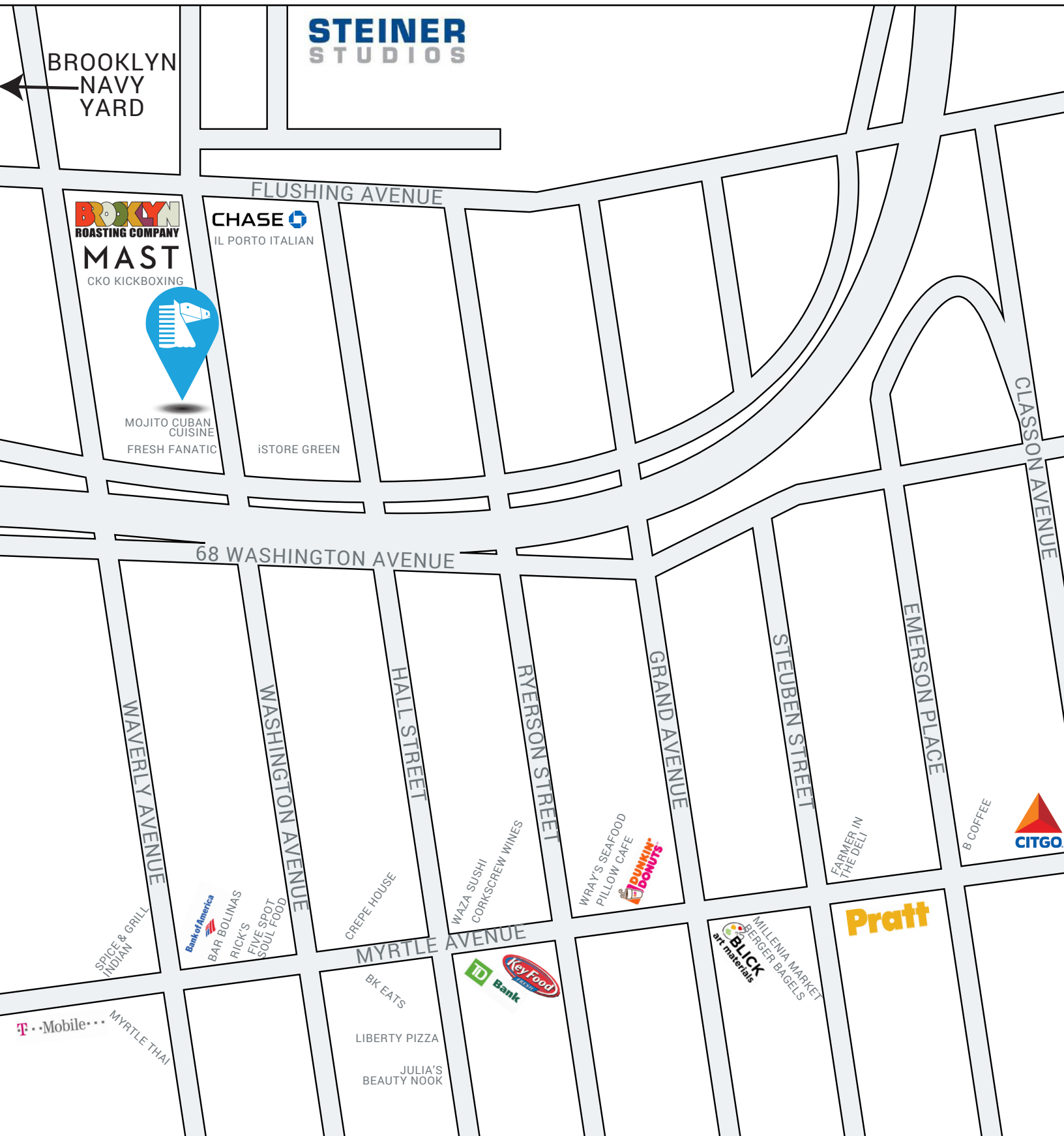
68 WASHINGTON AVENUE

BROOKLYN



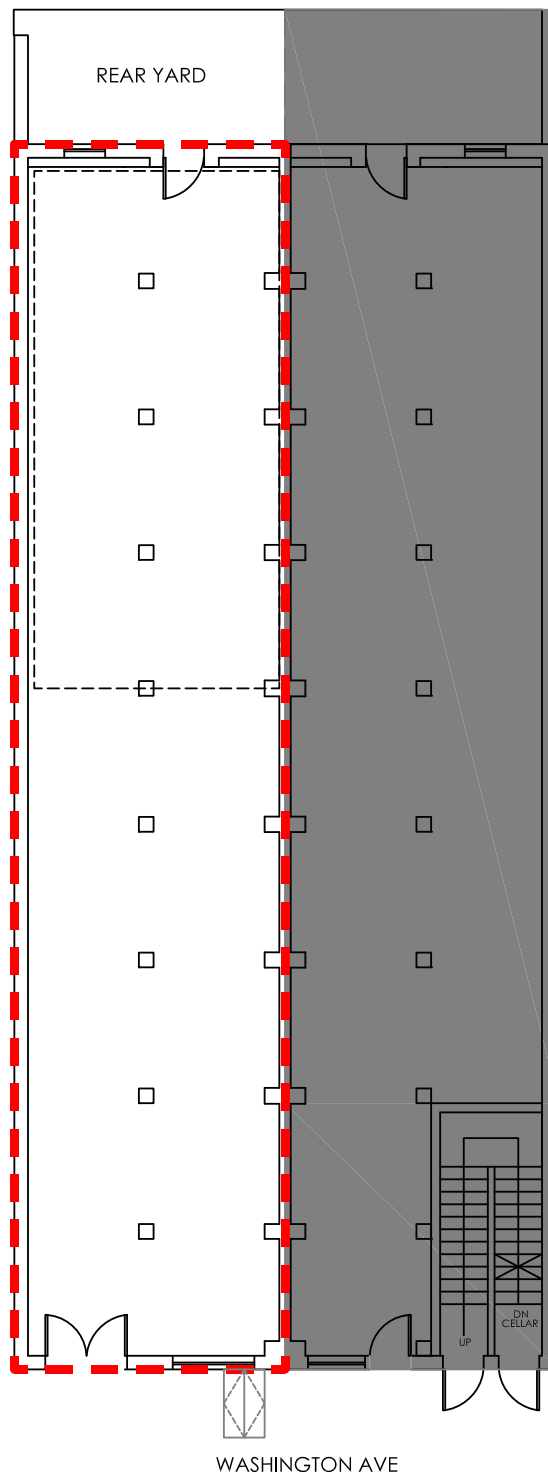
THOR
EQUITIES

WWW.THOREQUITIES.COM



68 WASHINGTON AVENUE

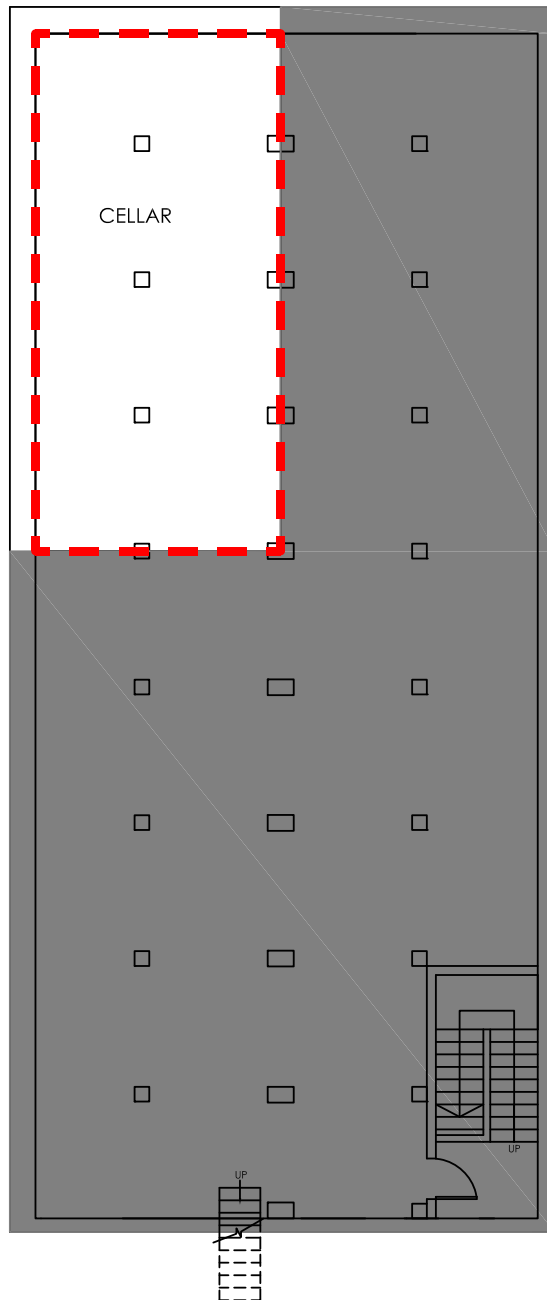
BROOKLYN



GROUND FLOOR

68 WASHINGTON AVENUE

BROOKLYN



LOWER LEVEL

Although all information furnished regarding this property is from sources deemed reliable, such information has not been verified, and no express representation is made nor is any to be implied as to the accuracy thereof and it is submitted subject to error, omissions, change of price, rental or other conditions, prior sale, lease or financing, or withdrawal without notice.