

A black and white photograph of the Manhattan Bridge tower and suspension cables. The image is taken from a low angle, looking up at the bridge structure. The tower is made of stone and has a date '1875' inscribed on it. The suspension cables are made of steel and are arranged in a grid pattern. A white rectangular box is overlaid on the upper part of the image, containing the number '292' and the text 'Atlantic Avenue'.

292

Atlantic Avenue

Downtown Brooklyn is the place to be.



Smith St

292

Atlantic Avenue

292 Atlantic Avenue is a dynamic retail location just minutes from the new state of the art Barclays Center, home of the Brooklyn Nets. Not to mention the other notable hot spots like Smith Street and Brooklyn's renowned Restaurant Row, providing diners authentic ethnic cuisines. With more than 2.5 million residents, Brooklyn houses the largest population of all the New York boroughs. Add all this together and **292 Atlantic Avenue** is a compelling choice for your next location.

Nearby

- About 5 minutes from the Brooklyn Bridge (about 3 miles)
- About 20 minutes from Coney Island and Brighton Beach
- 2 minutes from Downtown Brooklyn
- About 10 minutes to Williamsburg (3 miles)
- 30 minutes (4 miles) from Governors Island

Attractions/Museums/Galleries

- Barclays Center, home of The Nets Basketball team, NY Islanders Hockey Team (7 mins away)
- Brooklyn Botanic Garden (8 mins away)
- DUMBO Arts Center (6 mins away)
- Prospect Park (8 mins away)

Retail

- Hip retailers, quirky shopping district
- Middle Eastern retail btwn 3rd and 4th Avenues at Atlantic Ave.
- Stores for Islamic books and clothing

Hotels

- Within 0.5 miles: N U Hotel, Sheraton, Aloft
- Within 2 miles: Best Western Plus, Marriott-Brooklyn, Hotel Le Bleu, Andaz Wall Street and The Ritz-Carlton

Restaurants

- Smith Street is known as "Brooklyn's renowned restaurant row" according to *New York Magazine*

Transportation

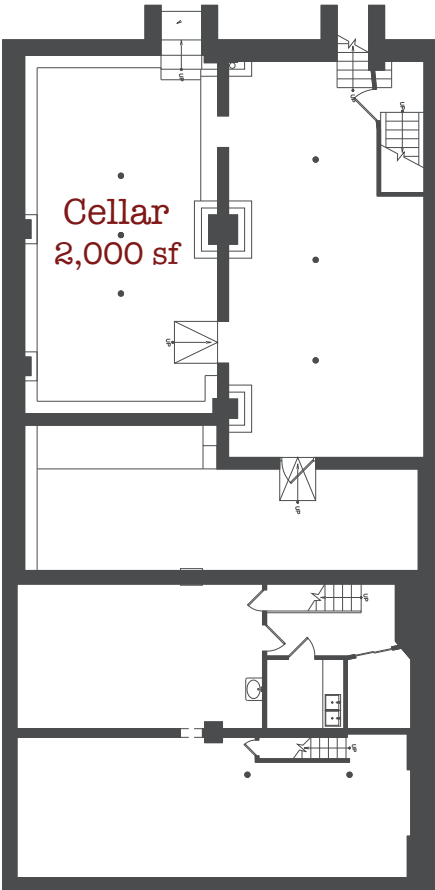
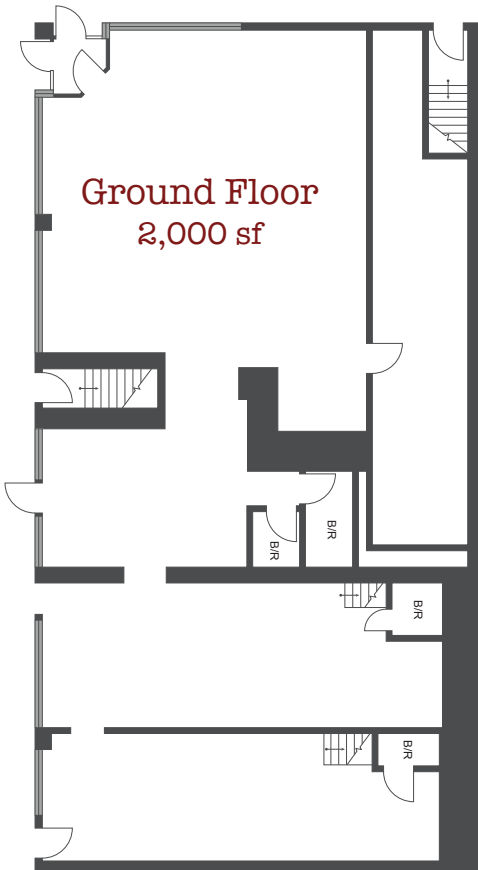
- Conveniently located near 12 subway lines including: A, B, C, D, F, G, N, R, 2, 3, 4, and 5, as well as the LIRR



2.5m

Largest population
of all 5 boroughs

ATLANTIC AVENUE



2,000
sf ground floor retail

2,000
sf available in the cellar

4,000
total sf overall

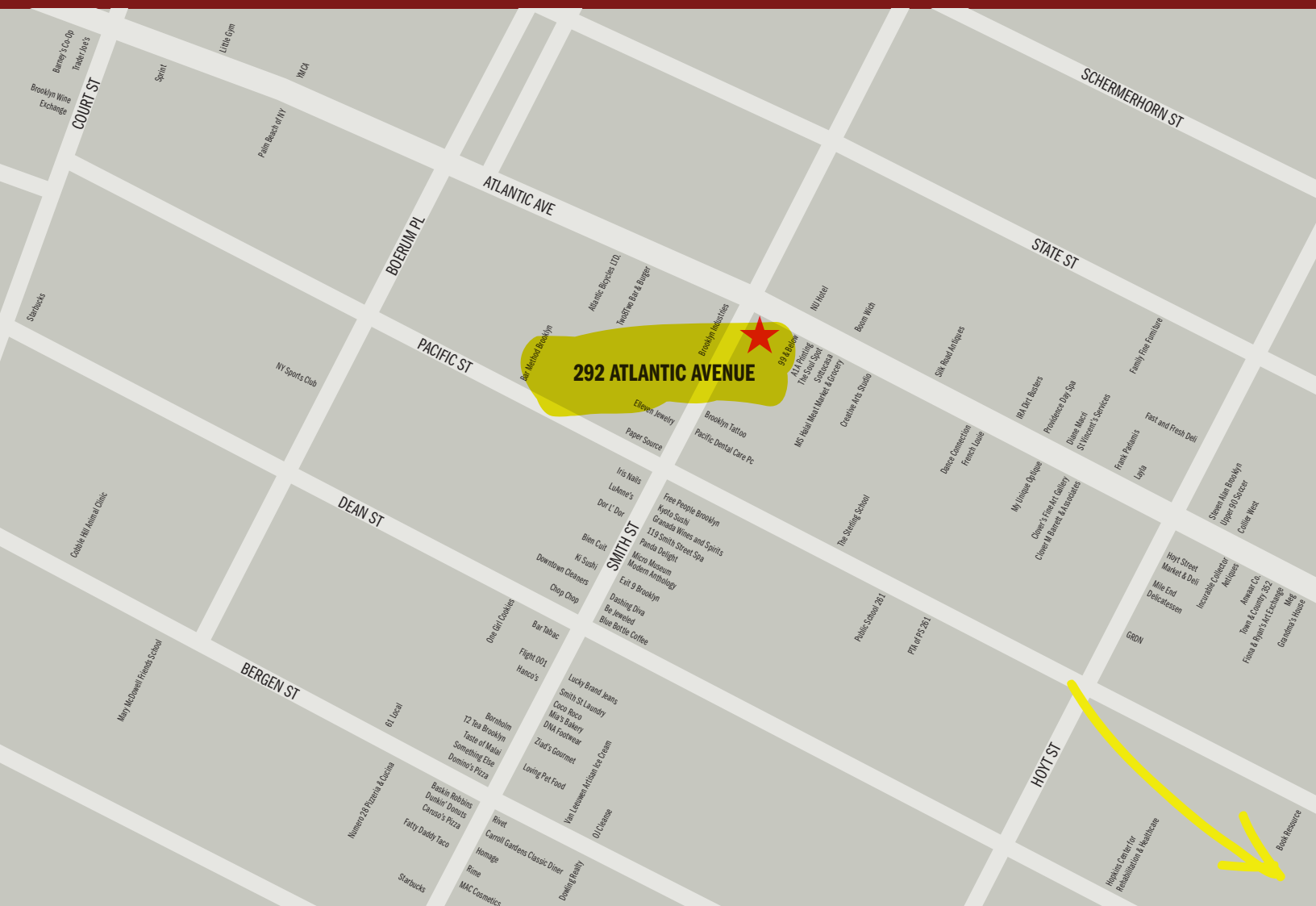
40 feet
frontage on Atlantic Ave.

80 feet
frontage on Smith Street

292

Atlantic Avenue

www.292AtlanticAvenue.com



THOR
EQUITIES

Glenn Vogel
(212) 529-7427
gvogel@thorequities.com
www.thorequities.com

Thor Equities is a leader in urban real estate development, leasing and management, pursuing premier retail and mixed-use assets in high-density areas. Thor Equities provides the best possible "High Street" retail and mixed-use building environments within the urban landscape across the United States, Latin America and Europe – all while delivering attractive, risk-adjusted returns to investors.

Bardays Center

Design and production by REA www.realestatearts.com