

556
W.126TH
— IN —
Harlem

ADJACENT TO NEW
\$7 BILLION, 17-ACRE
EXPANSION OF COLUMBIA
UNIVERSITY.

IN HARLEM, NEW YORK



THOR
EQUITIES



STATS

- 2,520 SF on Ground
- 2,350 SF Lower Level
- 116' frontage on Broadway
- Located in Morningside Heights
- Corner of Broadway & 126th Street
- Adjacent to the new \$7 billion, 17-acre expansion of Columbia University
- Close proximity to Morningside Park, the Manhattan School of Music, Barnard College, Teachers College and Columbia's main campus
- Situated one block from the 1 subway line, three blocks from the A, B, C and D, and a short drive to the Henry Hudson Parkway
- Nearby tenants include Whole Foods Grocery, The Apollo Theater, AMC Magic Johnson Theaters, and H&M



HARLEM COFFEE

GOOD EATS

GOOD EATS

566

HARLEM COFFEE

ITALY GO

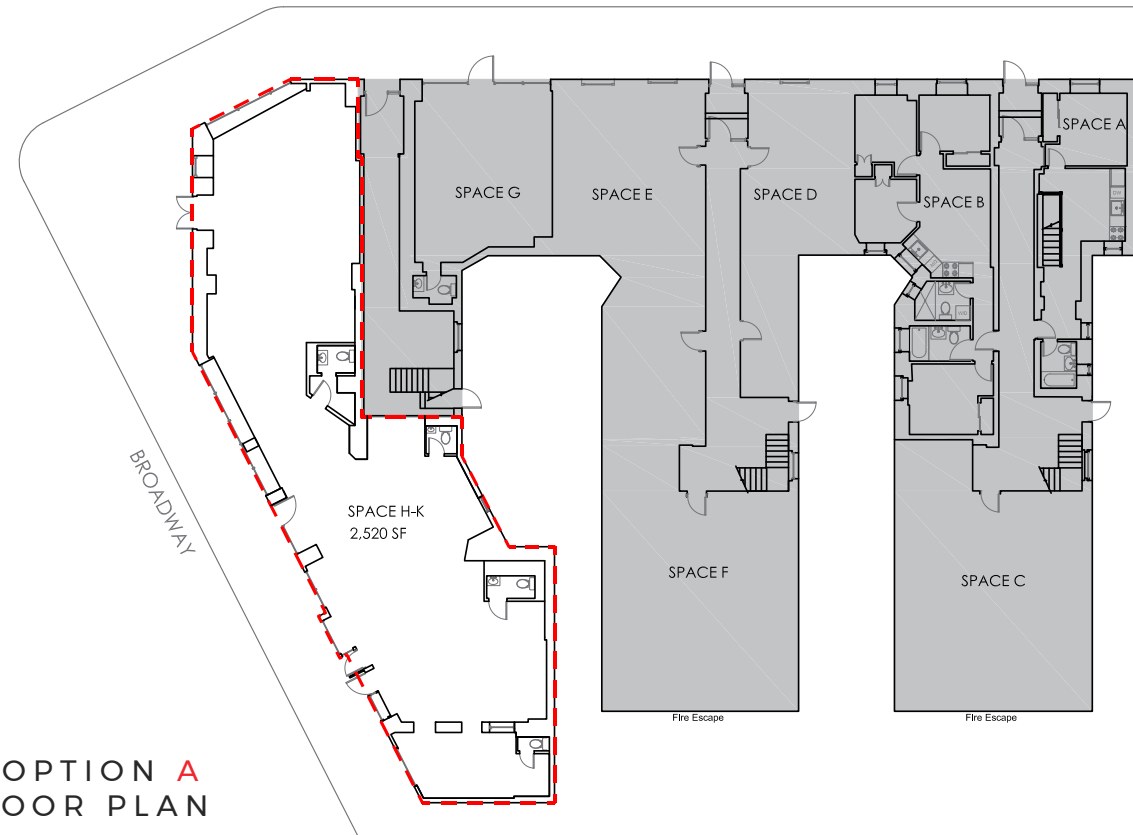
NYC



FLOORPLANS

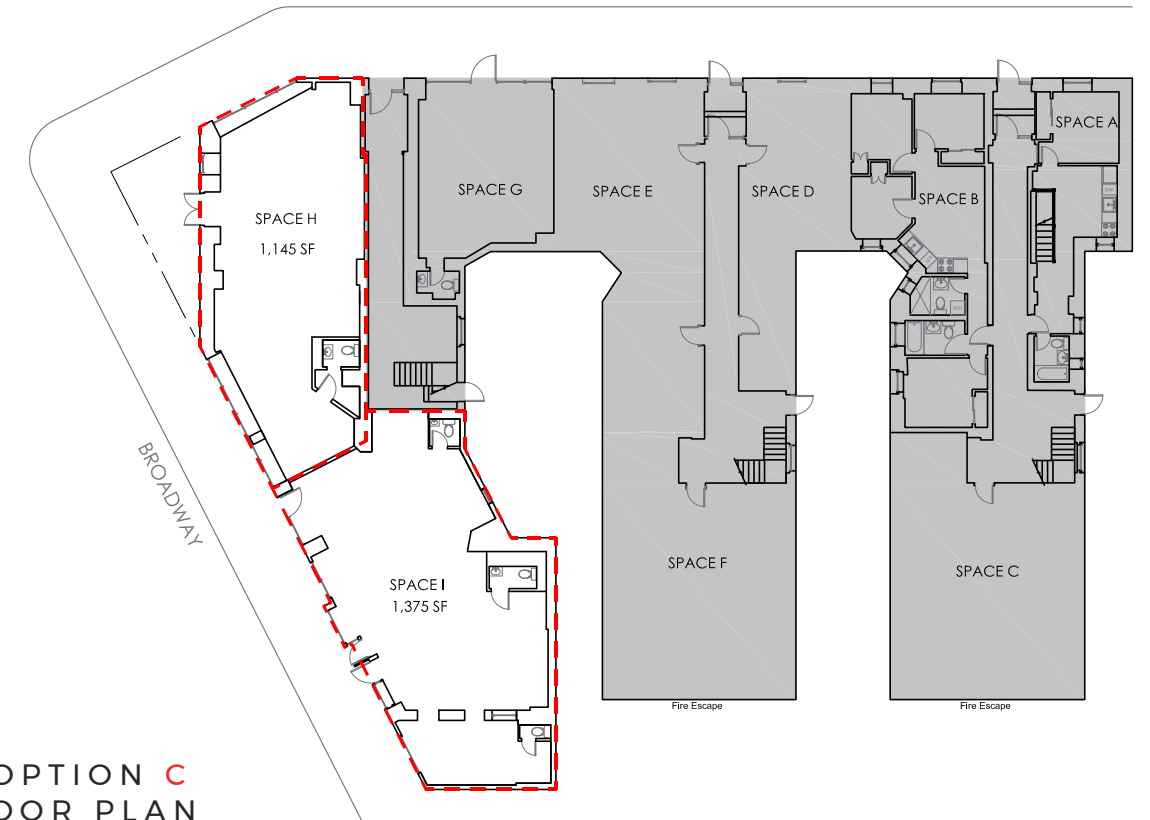
FLOORPLANS

WEST 126TH STREET



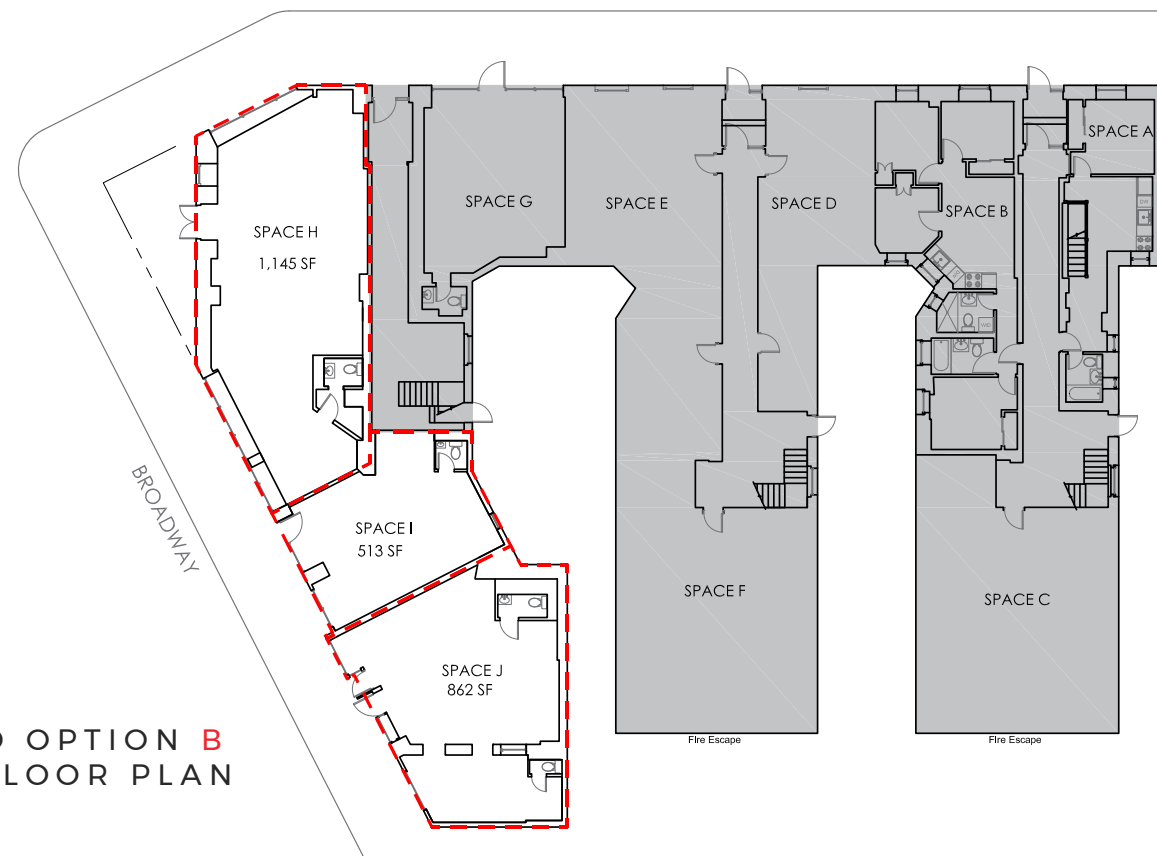
PROPOSED OPTION **A**
GROUND FLOOR PLAN

WEST 126TH STREET



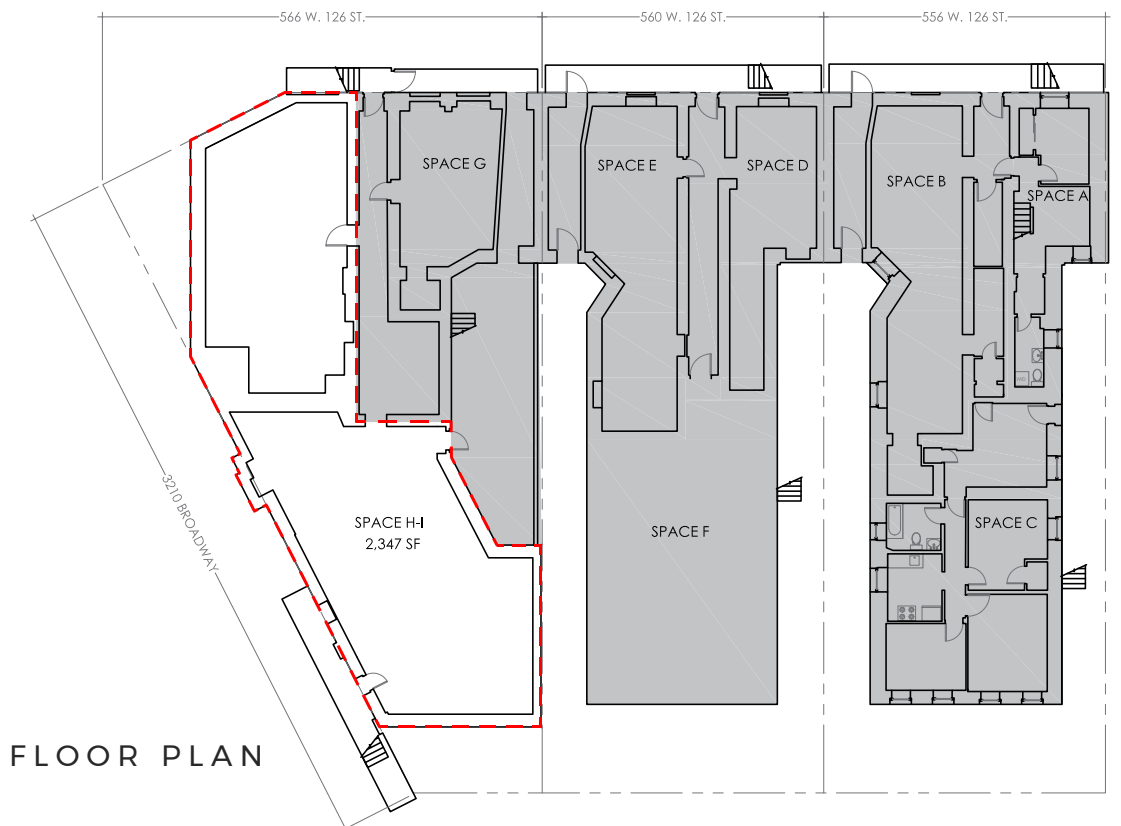
PROPOSED OPTION **C**
GROUND FLOOR PLAN

WEST 126TH STREET



PROPOSED OPTION **B**
GROUND FLOOR PLAN

LOWER LEVEL FLOOR PLAN





For more information,
please contact:

Kim Leone

212.529.7412

kleone@thorequities.com

