

470 BROADWAY

SOHO



THOR  
EQUITIES

WWW.THOREQUITIES.COM



## FEATURES

TOTAL SF	9,900 SF
GROUND FLOOR:	3,300 SF
SECOND FLOOR:	3,300 SF
LOWER LEVEL:	3,300 SF

FRONTAGE	
BROADWAY	35'

### HIGHLIGHTS

- TYPE: RETAIL
- TOTAL SF: 9,900 SF
- MARKET: SOHO

## ABOUT THIS PROPERTY

**UNPARALLELED LOCATION:** 470 Broadway offers a dream space for a retailer looking for that perfect boutique feeling in Manhattan's famous SoHo neighborhood.

**EXCELLENT RETAIL OPPORTUNITY:** With approximately 3,300 SF of retail space on the ground floor and approximately 35 feet of frontage on Broadway, 470 Broadway will attract an affluent clientele eager to peruse SoHo's shops. Anchored between Broome and Grand Streets, this property is just steps from one of the top five most heavily trafficked corners in New York City. Abundant with locals and tourists alike, SoHo is a premier shopping district. Neighboring tenants include Madewell, Timberland, Lululemon, Topshop, Ralph Lauren, Bloomingdales, and Zara.

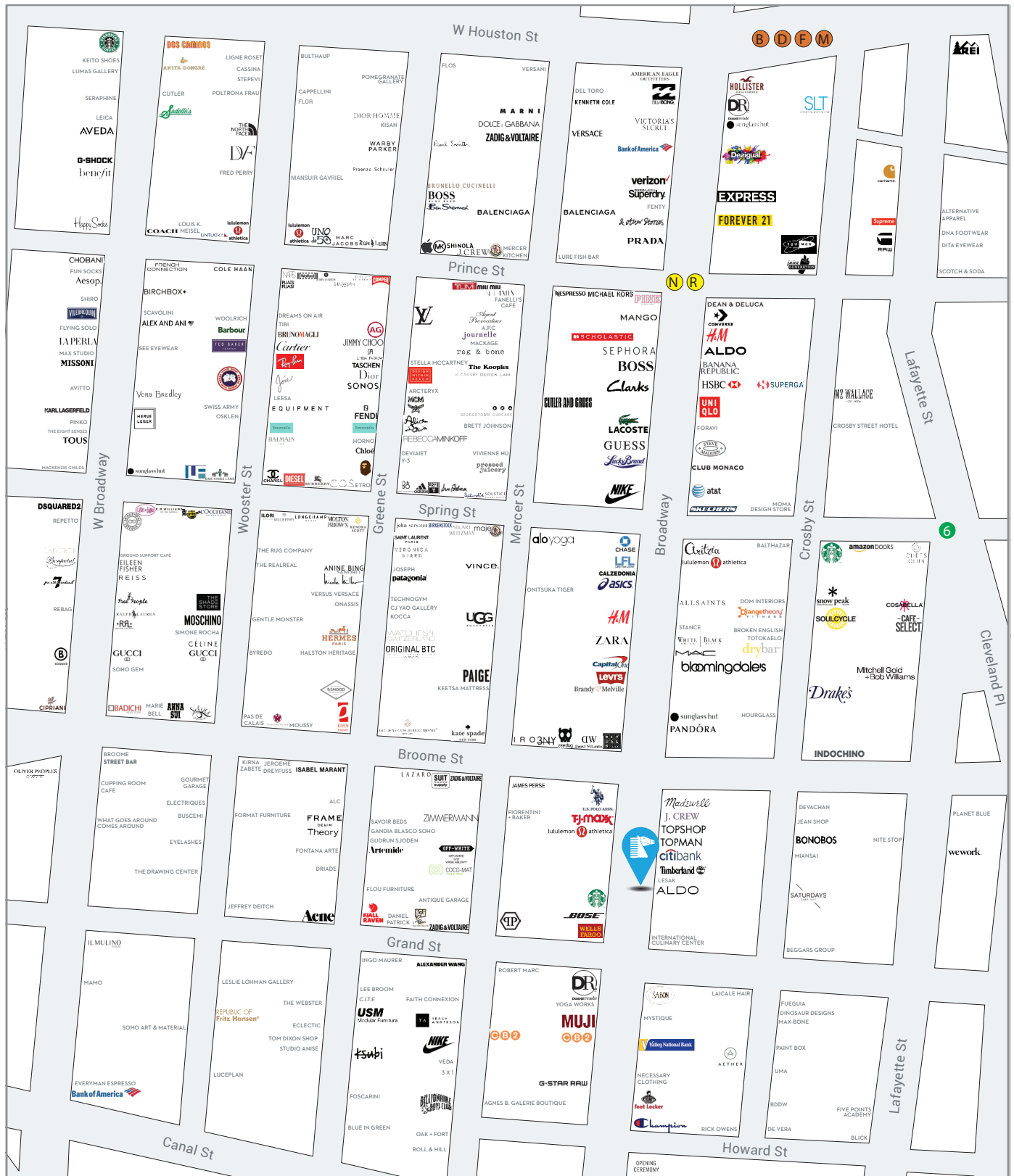
**HIGH-DENSITY TRADE AREA:** SoHo is one of New York City's signature shopping destinations. As a chic neighborhood with an international cachet, SoHo hotels are regularly booked to capacity, with demand outpacing supply. The neighborhood is also one of the city's premier luxury residential neighborhoods, achieving prices that rival the Upper East and Upper West Sides of Manhattan.

# 470 BROADWAY

## SOHO



**THOR  
EQUITIES**  
WWW.THOREQUITIES.COM



25 West 39th Street New York, NY 10018  
Phone (212) 529-5055 FAX (212) 460-5362

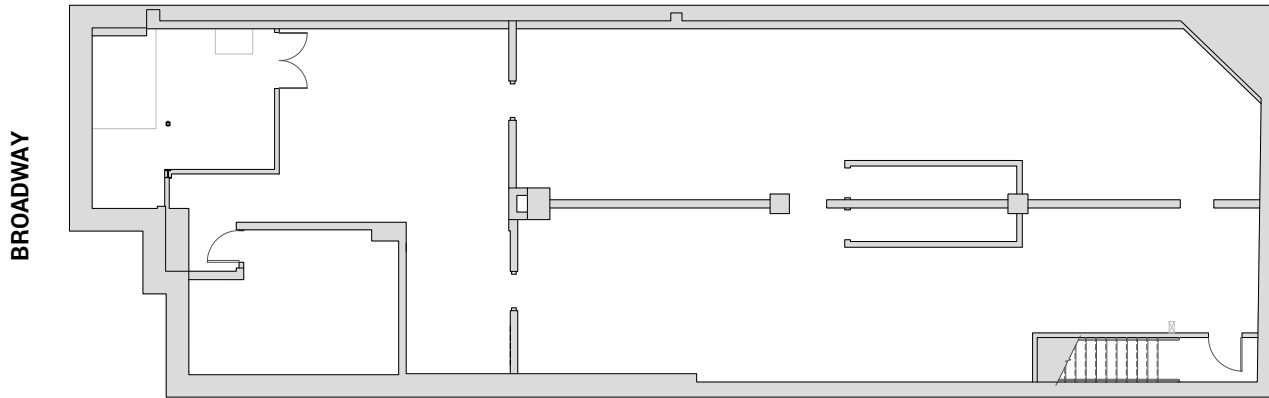
470 BROADWAY

SOHO

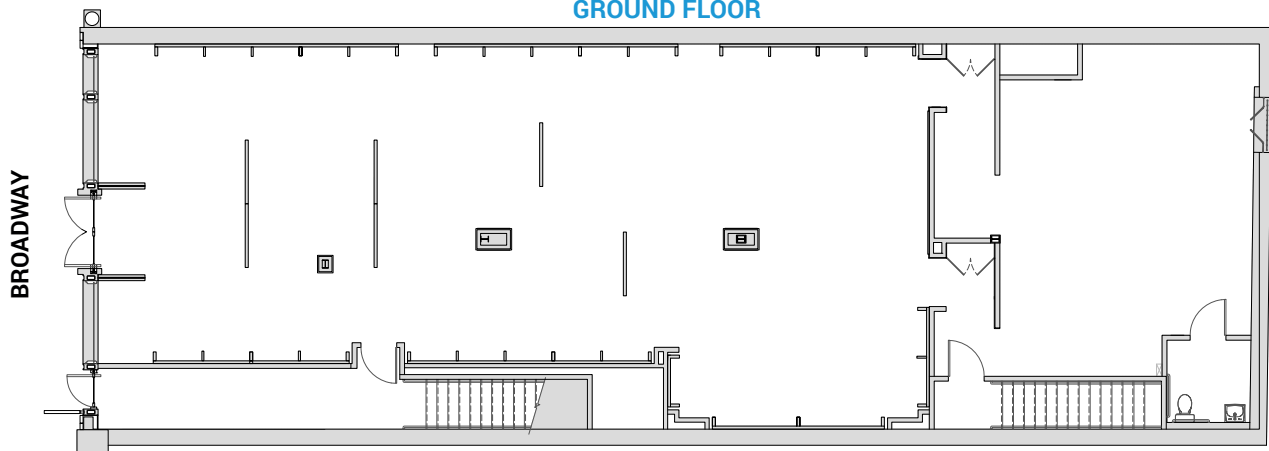


THOR  
EQUITIES  
WWW.THOREQUITIES.COM

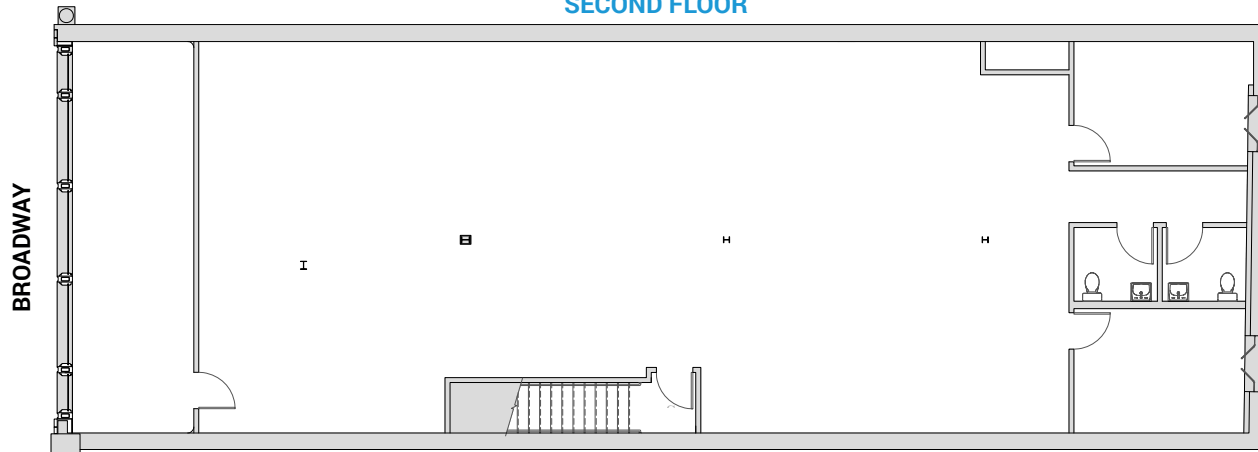
LOWER LEVEL



GROUND FLOOR



SECOND FLOOR



Although all information furnished regarding this property is from sources deemed reliable, such information has not been verified, and no express representation is made nor is any to be implied as to the accuracy thereof and it is submitted subject to error, omissions, change of price, rental or other conditions, prior sale, lease or financing, or withdrawal without notice.

25 West 39th Street New York, NY 10018  
Phone (212) 529-5055 FAX (212) 460-5362