

115 MERCER STREET

SOHO, NEW YORK



## FEATURES

TOTAL SF	3,500 SF
GROUND FLOOR:	2,000 SF
LOWER LEVEL:	1,500 SF

FRONTAGE	
MERCER STREET	24'

### HIGHLIGHTS

- TYPE: RETAIL
- TOTAL SF: 3,500 SF
- MARKET: SOHO, NEW YORK

## ABOUT THIS PROPERTY

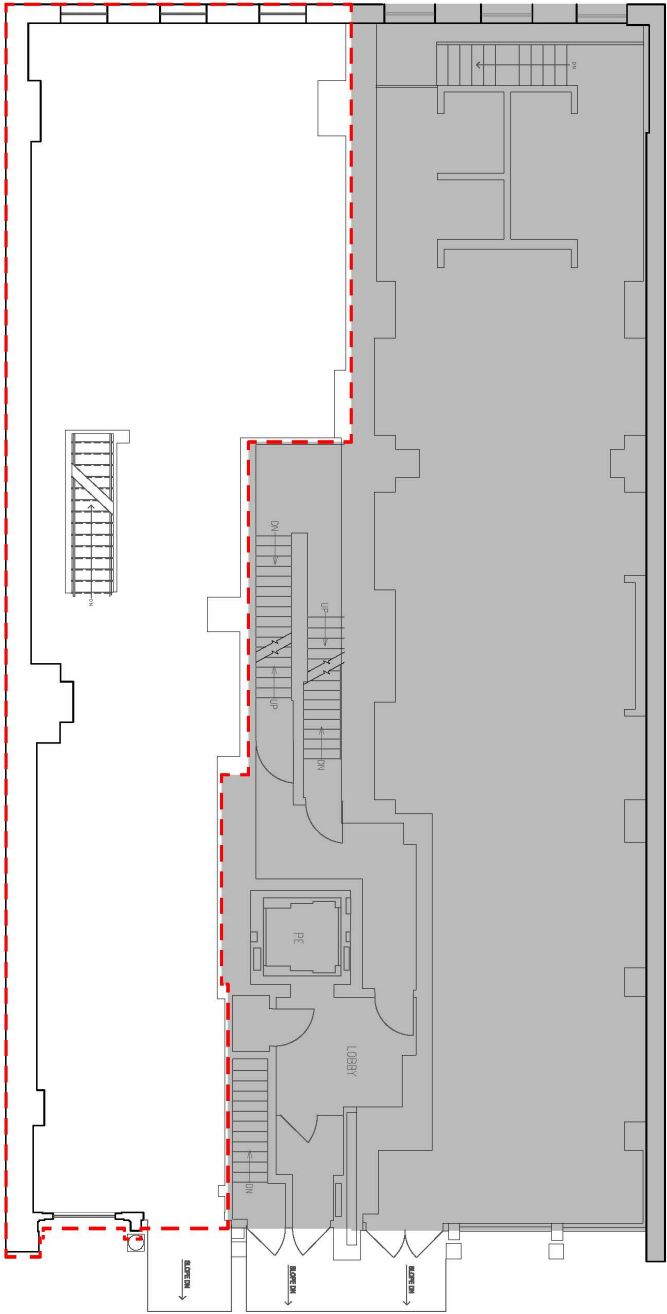
**UNPARALLELED LOCATION:** Anchored between Spring and Prince Streets in SoHo, 115 Mercer Street is just steps from one of the most heavily trafficked corners in all of NYC. SoHo has long been a destination for locals and tourists alike and the iconic neighborhood guarantees ultimate visibility in one of the most bustling attractions in the world.

**HEAVILY TRAFFICKED SHOPPING DISTRICT:** Synonymous with chic fashion-forward retailing, SoHo attracts a modern global audience with a bevy of national and international retailers. Neighboring tenants on Mercer Street include Tory Burch, Versace, Prada, Balenciaga, Dolce & Gabbana, Marni, Shamballa, & Other Stories, Nespresso, A.P.C., Rag & Bone, and many more.

**EXCELLENT RETAIL OPPORTUNITY:** Mercer Street attracts a chic clientele with an abundance of renowned retailers, boutiques, galleries and restaurants. With an international cachet and endless list of activities and entertainment, New Yorkers and tourists alike flock to this premier shopping neighborhood, making 115 Mercer St. subject to a high volume of pedestrians daily.

*115 MERCER STREET*

*SOHO, NEW YORK*

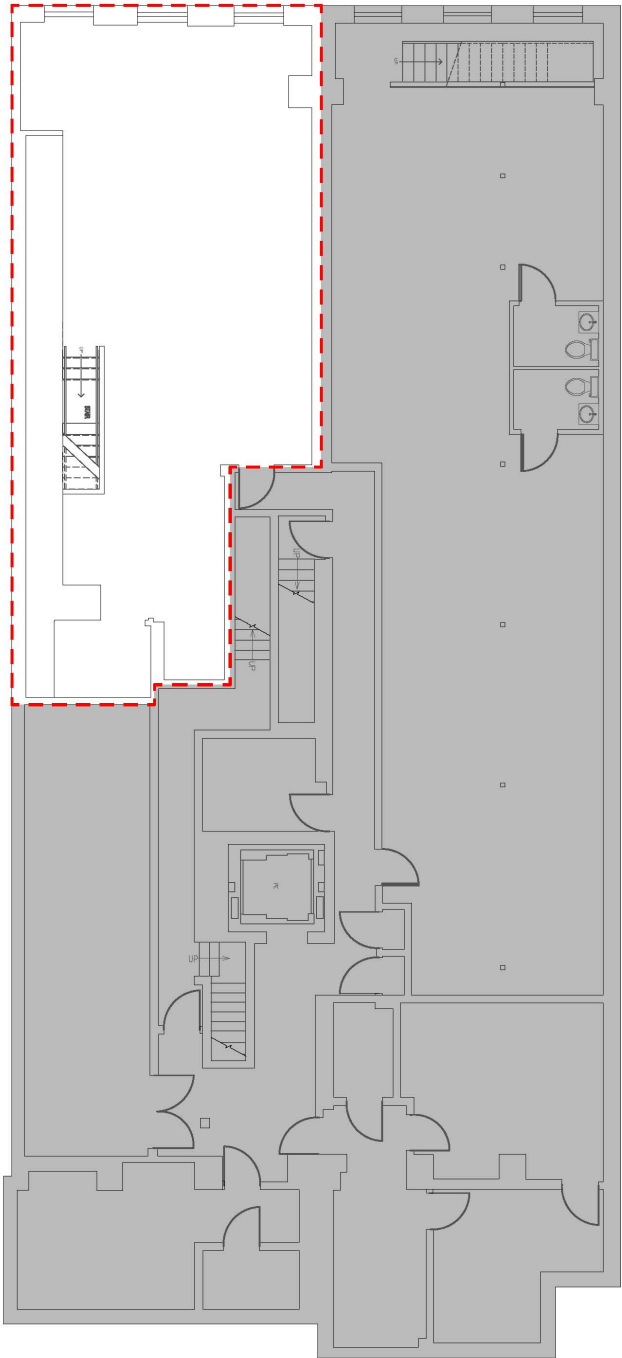


**MERCER STREET**

**GROUND FLOOR**

*115 MERCER STREET*

*SOHO, NEW YORK*



**MERCER STREET**

**LOWER LEVEL**

Although all information furnished regarding this property is from sources deemed reliable, such information has not been verified, and no express representation is made nor is any to be implied as to the accuracy thereof and it is submitted subject to error, omissions, change of price, rental or other conditions, prior sale, lease or financing, or withdrawal without notice.