

55.5 Greene Street

55.5 Greene Street, New York, NY 10013
Northwest Corner of Greene & Broome Streets



HIGHLIGHTS

For Lease
Type: Retail
Total SF: 20,500
Market: SoHo

TOTAL SF: 20,500 SF
GROUND: 5,000 SF
LOWER LEVEL: 5,500 SF
SECOND FLOOR: 5,000 SF
THIRD FLOOR: 5,000 SF

FRONTAGE:
50'

UNPARALLELED LOCATION

At the corner of Broome and Greene Streets in the heart of eclectic SoHo, 55.5 Greene Street embodies the enviable structure and location of one of the most sought after retail neighborhoods in Manhattan. Combining the premier corner retail of 470 Broome Street with unparalleled space on Greene Street, 55.5 Greene Street is a luxury retail dream.

PEDESTRIANS GALORE

With an international cachet, and an endless list of entertainment, activities, and more, New Yorkers and tourists alike flock to SoHo. Whether shopping the endless retail, visiting museums, bars, music clubs/lounges, or eating at delicious restaurants, SoHo has something for everyone.

HIGHEST PERFORMANCE RETAIL

SoHo is home to some of the nation's top performing stores for national and international retailers such as Chanel, Calvin Klein, Victoria's Secret, Stella McCartney, H&M, Marc Jacobs and Prada. Retail locations in this area are in very high demand and rarely become available.

DYNAMIC LAYOUT

In the relaxed but popular corridor that houses 55.5 Greene Street, frontage and space are a rarity. 55.5 Greene Street boasts both, with adequate frontage on both Broome and Greene and over 20,500 SF total of retail space. The ground floor, lower level, second, and third floors all boast approximately 5,000 SF, 12' to 16' ceiling heights throughout the entire building and impeccable condition. 55.5 Greene Street is truly the best that retail South of Houston has to offer.

PUBLIC TRANSPORTATION HUB

All of Manhattan's major subway lines land within footsteps of Greene Street including: N, R, 6, C, E, J, M, Z. Shoppers can also access the property through the 1, 6 and 22 MTA bus lines.

DENSELY POPULATED

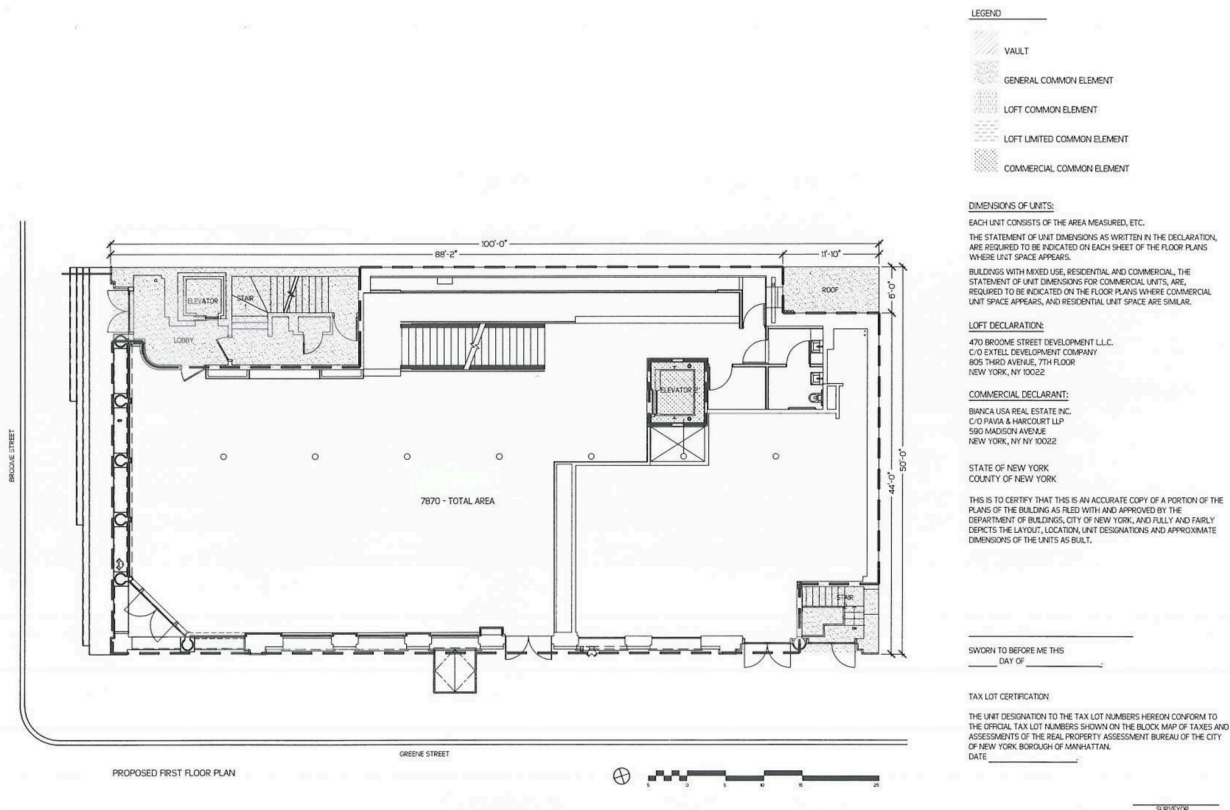
SoHo is one of NYC's signature shopping destinations. SoHo hotels are regularly booked to capacity, with demand outpacing supply. The neighborhood is also one of Manhattan's premier luxury residential neighborhoods achieving prices that rival the Upper East and West Sides of Manhattan. The area is also home to one of the lowest office vacancy rates in the country with a rate of 0.6%.

CONTACT

Sam Polese
212-529-7426
spolese@thorequities.com

55.5 Greene Street

55.5 Greene Street, New York, NY 10013
Northwest Corner of Greene & Broome Streets



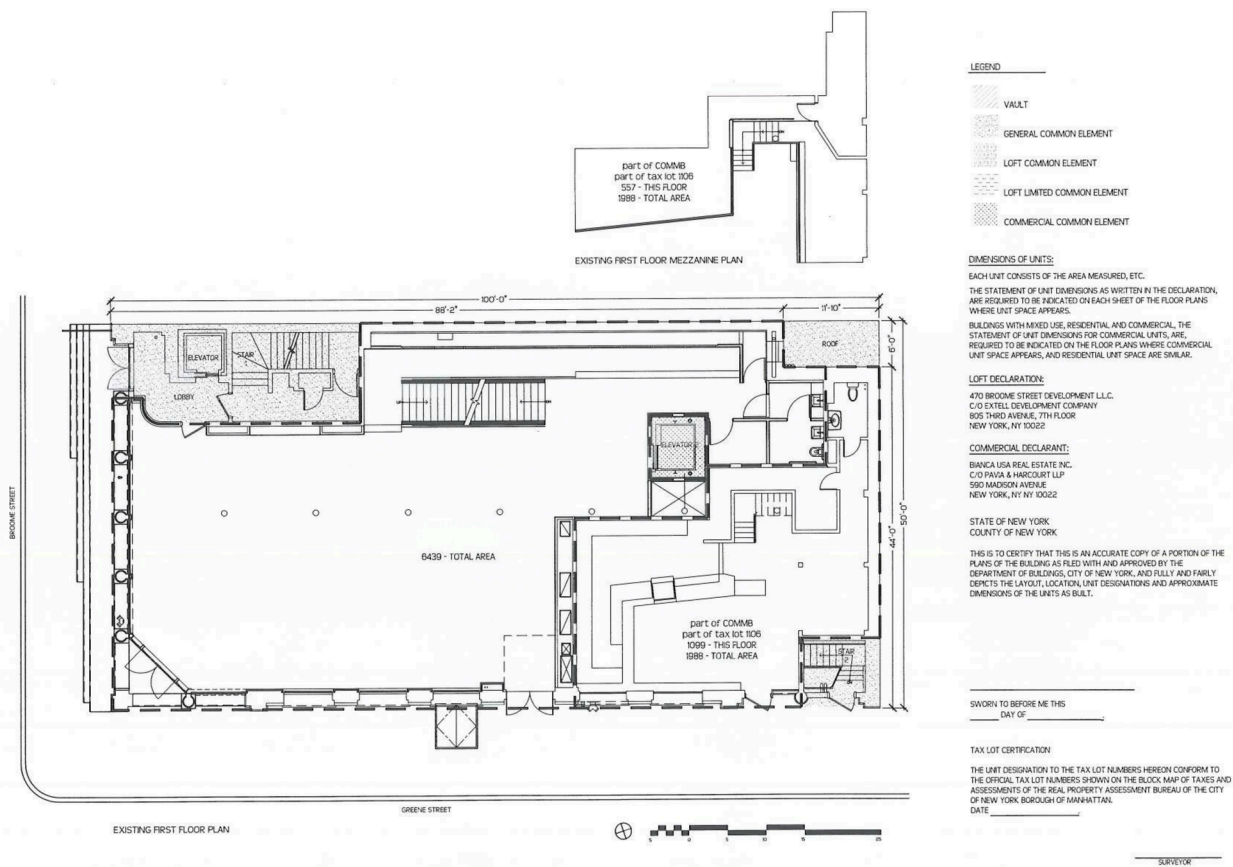
Available

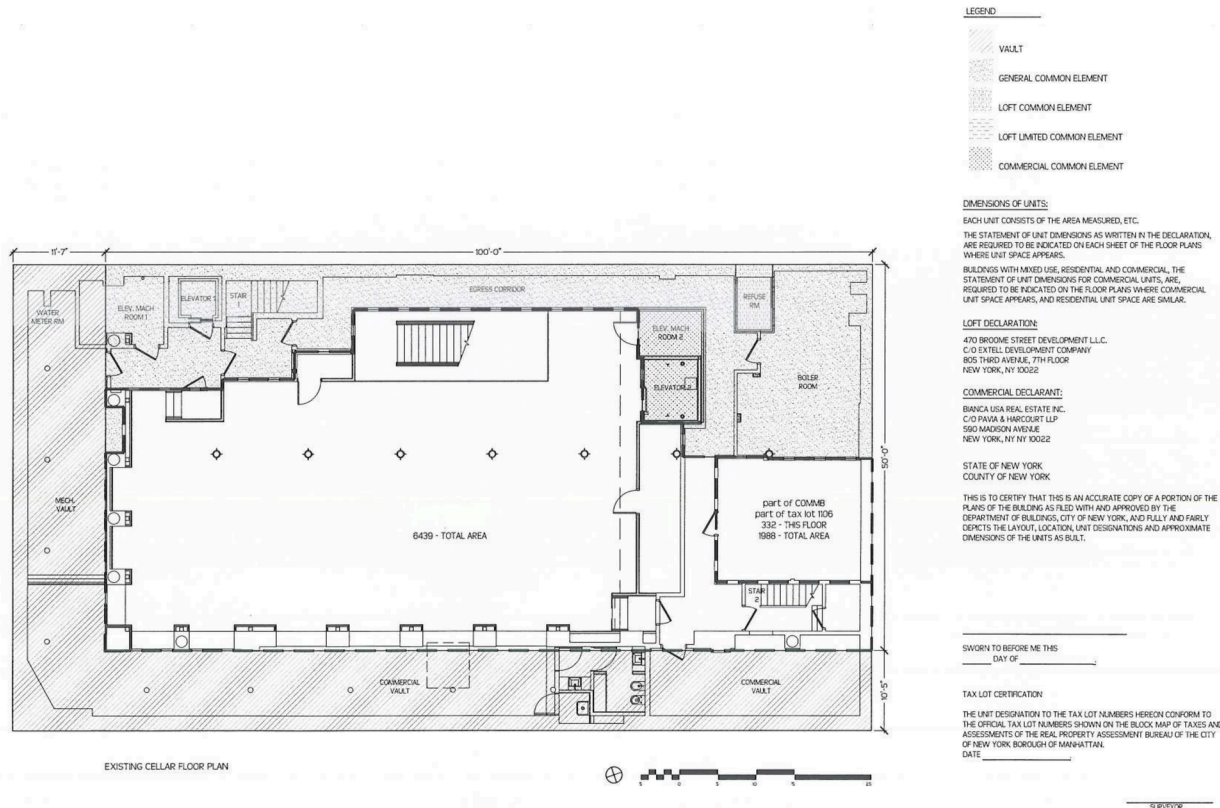
5,000 SF

55.5 Greene Street

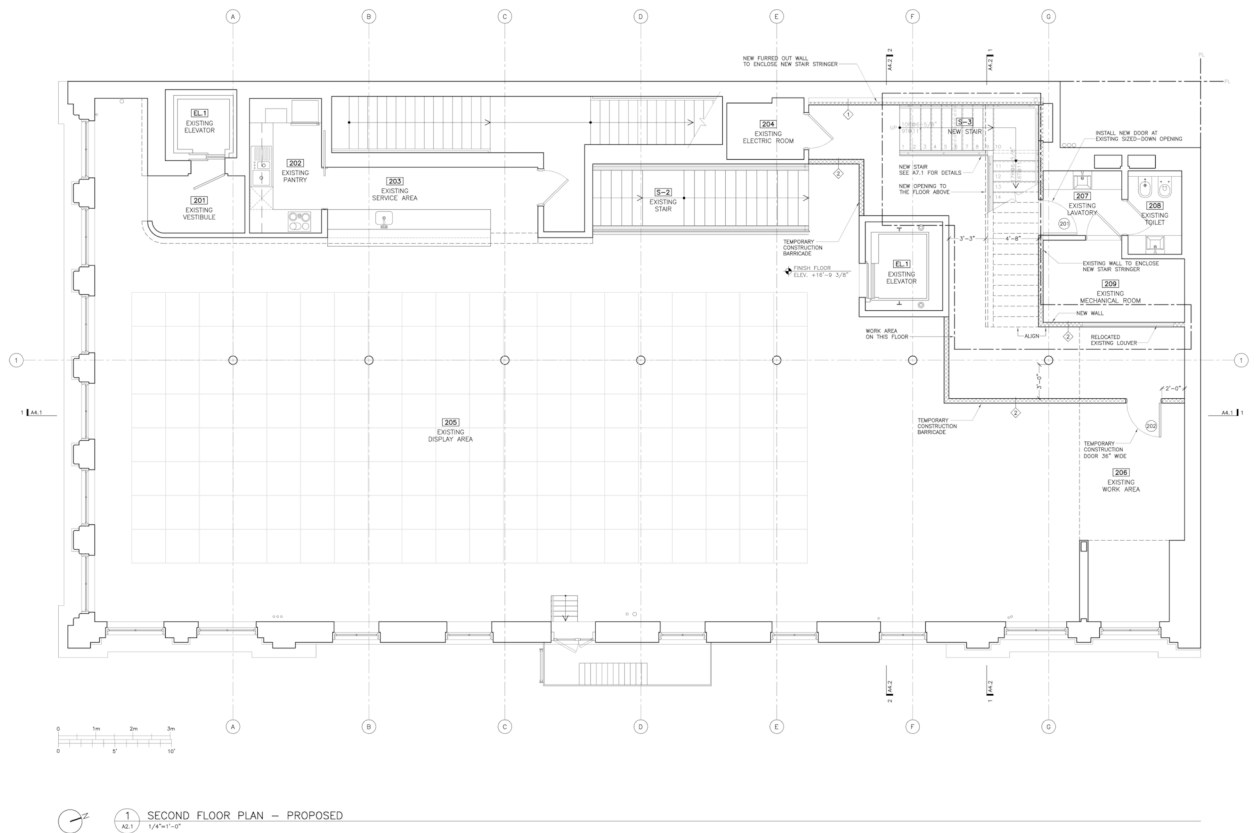
55.5 Greene Street, New York, NY 10013

Northwest Corner of Greene & Broome Streets





5,500 SF



1 SECOND FLOOR PLAN - PROPOSED
A2.1 1/4"=1'-0"

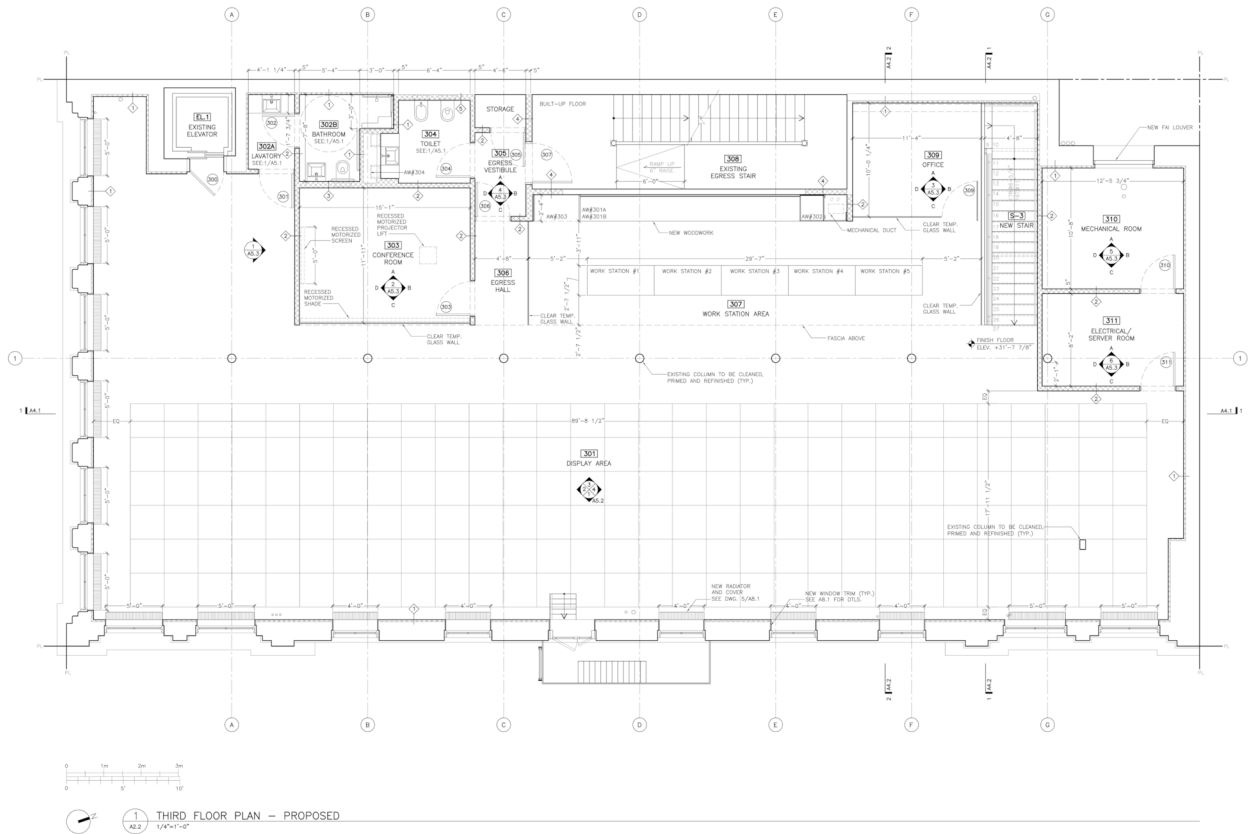
10.APR.2008_REV
27.FEB.2008_REV
20.FEB.2008
07.FEB.2008_REV
11.DEC.2007_REV
07.NOV.2007_REV
26.OCT.2007_REV
19.OCT.2007_REV
05.OCT.2007_FOR (R)
27.SEP.2007
12.SEP.2007_DOB
DATE: 11.SEP.2007

DATE: 11-SEP-2007	
PROJECT CODE	SHEET NUMBER
SIC	A2.1

PROJECT
5015 NORTH AMERICA
470 BROOME STREET
NEW YORK, NY 10013

DATE: 11-SEP-2007	
PROJECT CODE	SHEET NUMBER
SIC	A2.1

5,000 SF








5,000 SF