

124 West 24th Street

124 West 24th Street, New York, NY 10011
South Block between Sixth & Seventh Avenues



HIGHLIGHTS

For Lease
Type: Retail
Total SF: 11,000
Market: Chelsea

CONTACT

Sam Polese
212-529-7426
spolese@thorequities.com

TOTAL SF: 11,000 SF
GROUND: 5,500 SF
LOWER LEVEL: 5,500 SF

FRONTAGE:
63'

UNPARALLELED LOCATION

Located in the heart of Manhattan's fashionable Chelsea district, this property offers users the opportunity to occupy space in one of the most sought after retail and residential neighborhoods in Manhattan. The area has become a busy home retail industry corridor, with almost a dozen tenants catering to them. With mass transit access from numerous locations within walking distance, 124 West 24th St. is highly visible to shoppers.

HIGH-DENSITY TRADE AREA

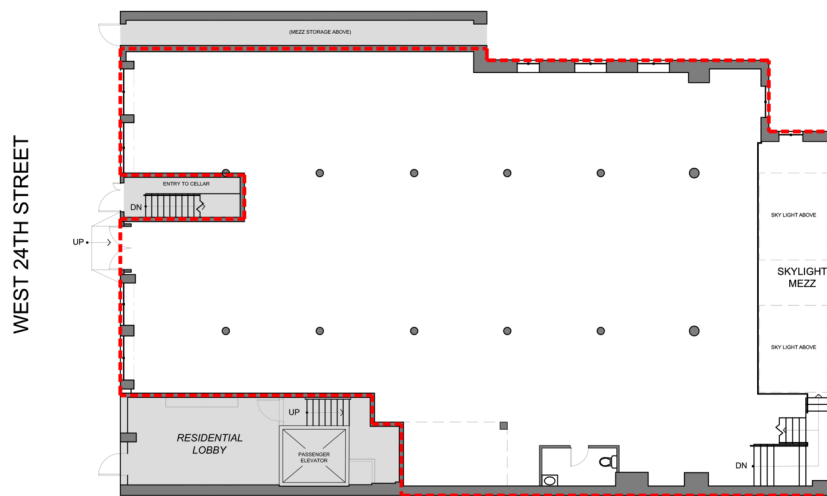
Considered one of the first prime residential areas in New York City, Chelsea has revamped and reinvented itself many times. Today it is home to the Chelsea Market as well as leading retailers and technology icons including Google, Samsung and many of their competitors.

EXCELLENT RETAIL OPPORTUNITY

This prime location provides retailers with a great venue to showcase their wares. The ground floor measures over 5,500 SF, with 50 feet of frontage on 24th Street. The basement measures 5,500 SF. We will consider all divisions and also consider leasing to one user.

124 West 24th Street

124 West 24th Street, New York, NY 10011
South Block between Sixth & Seventh Avenues



GROUND LEVEL LOD

SCALE: N.T.S

2013_8_12_124 W24th St_LOD



25 WEST 39TH STREET
NEW YORK, N.Y. 10018
TEL 212 529-5055 FAX 212 475-0514

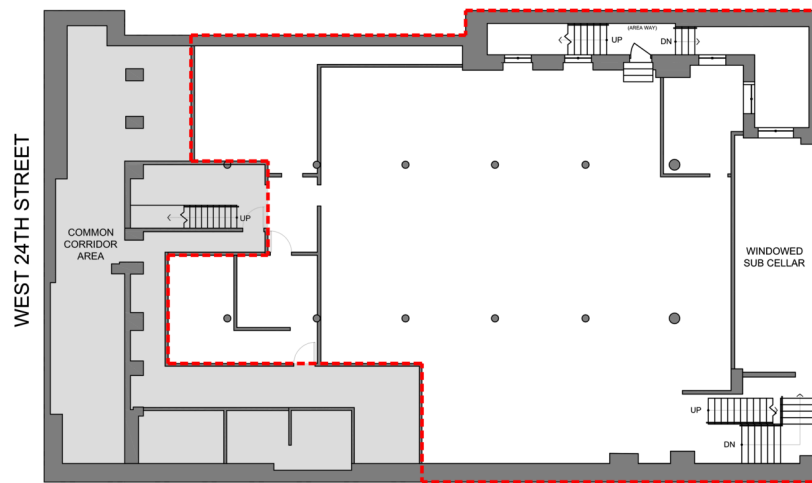
THIS EXHIBIT IS PROVIDED FOR ILLUSTRATIVE PURPOSES ONLY, AND SHALL NOT BE DEEMED TO BE A WARRANTY, REPRESENTATION OR AGREEMENT BY LANDLORD THAT THE CENTER COMMON AREAS BUILDINGS AND/OR EXHIBIT WILL BE AS ILLUSTRATED ON THIS EXHIBIT, OR THAT ANY TENANTS, WHICH MAY BE REFERENCED ON THIS EXHIBIT, WILL AT ANY TIME BE OCCUPANTS OF THE CENTER. LANDLORD RESERVES THE RIGHT TO MODIFY SIZE, CONFIGURATION AND OCCUPANTS OF THE CENTER AT ANY TIME.

124 W24th St. **LOD**
NEW YORK, NY
AUGUST 12, 2013
C. MCLAUGHLIN

Ground Floor Available 5,500 SF

124 West 24th Street

124 West 24th Street, New York, NY 10011
South Block between Sixth & Seventh Avenues



LOWER LEVEL LOD

SCALE: N.T.S

2013_8_12_124 W24th St_LOD



25 WEST 39TH STREET
NEW YORK, N.Y. 10018
TEL 212 529-5055 FAX 212 475-0514

THIS EXHIBIT IS PROVIDED FOR ILLUSTRATIVE PURPOSES ONLY, AND SHALL NOT BE DEEMED TO BE A WARRANTY, REPRESENTATION OR AGREEMENT BY LANDLORD THAT THE CENTER/Common Areas BUILDINGS AND/OR EXHIBIT WILL BE AS ILLUSTRATED ON THIS EXHIBIT, OR THAT ANY TENANTS, WHICH MAY BE REFERENCED ON THIS EXHIBIT, WILL AT ANY TIME BE OCCUPANTS OF THE CENTER. LANDLORD RESERVES THE RIGHT TO MODIFY SIZE, CONFIGURATION AND OCCUPANTS OF THE CENTER AT ANY TIME.

124 W24th St.

NEW YORK, NY
AUGUST 12, 2013
C. MCLAUGHLIN



Lower Level | Available

5,500 SF