

63 Greene Street

63 Greene Street, New York, NY 10012
West Block between Spring & Broome Streets



HIGHLIGHTS

For Lease
Type: Retail
Total SF: 4,800
Market: SoHo

CONTACT

Sam Polese
212-529-7426
spolese@thorequities.com

TOTAL SF: 4,800 SF
GROUND: 3,000 SF
LOWER LEVEL: 1,800 SF

FRONTAGE:
30'

UNPARALLELED LOCATION

Situated between Broome and Spring Streets, 63 Greene St. presents a rare opportunity to occupy space in one of the most sought after retail neighborhoods in Manhattan.

HEAVILY TRAFFICKED SHOPPING DISTRICT

SoHo is home to some of the nation's top performing stores for national and international retailers such as Chanel, Calvin Klein, Victoria's Secret, Stella McCartney, H&M, Marc Jacobs, and Prada. Retail locations in this area are in very high demand and rarely become available.

HIGH-DENSITY TRADE AREA

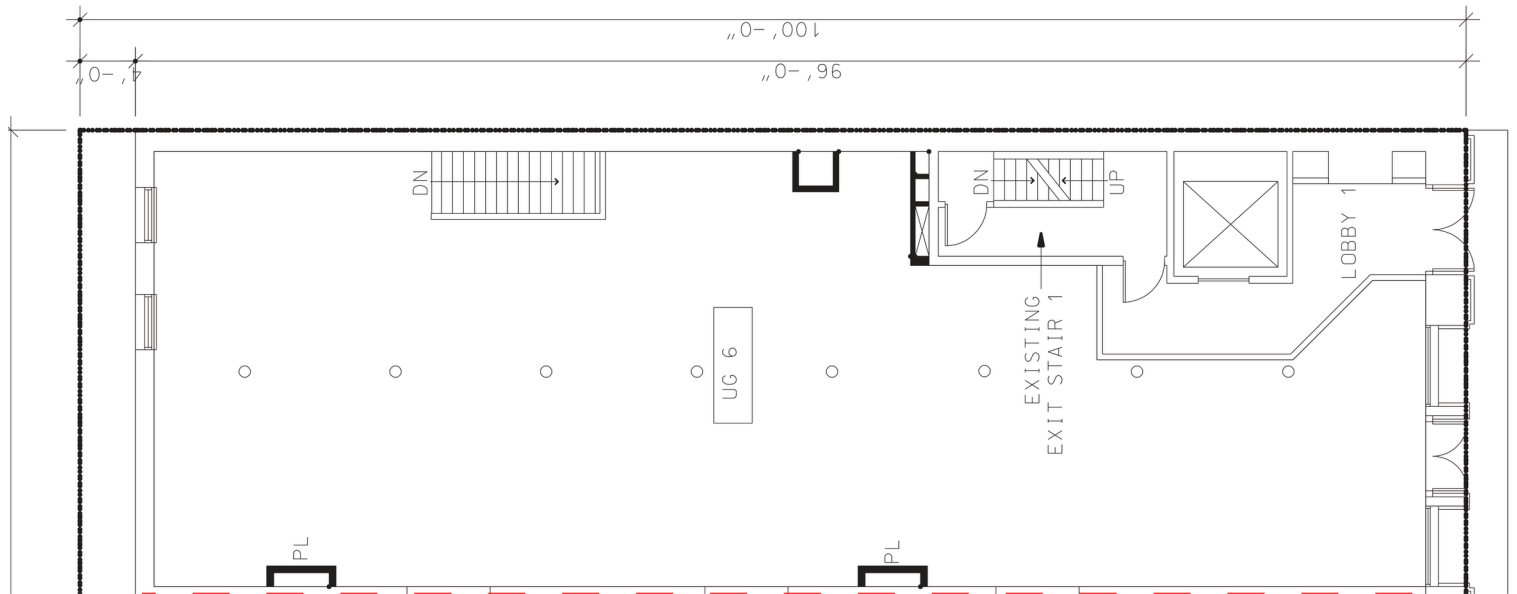
SoHo is one of New York City's signature shopping destinations. Hotels are regularly booked to capacity, with demand outpacing supply. SoHo is also one of Manhattan's premier luxury residential neighborhoods, achieving prices that rival the Upper East Side and Upper West Side of Manhattan.

EXCELLENT RETAIL OPPORTUNITY

63 Greene St. boasts plentiful space in what has become known as the "Madison Avenue of SoHo." The building possesses 4,800 SF of retail space, including 3,000 SF on the ground and 1,800 SF on the lower level. With 30 feet of frontage, any retailer can establish a recognizable brand at 63 Greene.

63 Greene Street

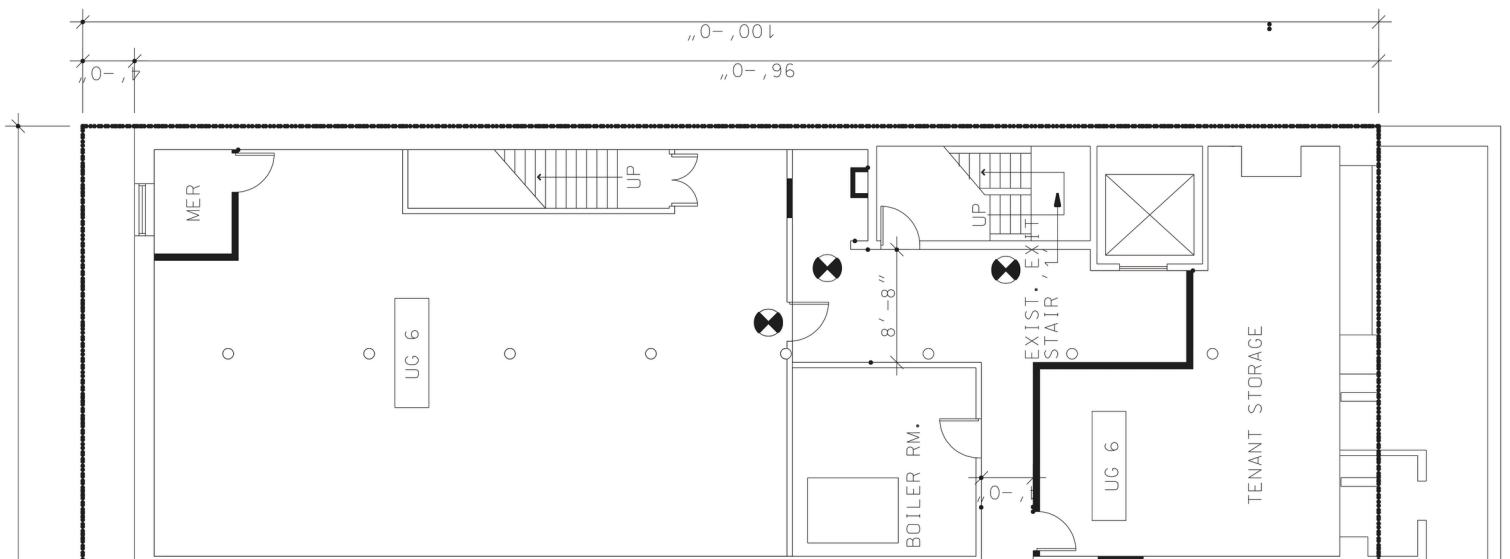
63 Greene Street, New York, NY 10012
West Block between Spring & Broome Streets



Ground Floor Available 3,000 SF

63 Greene Street

63 Greene Street, New York, NY 10012
West Block between Spring & Broome Streets



Lower Level | Available 1,800 SF