

25 Mercer Street

25 Mercer Street, New York, NY 10013

West Block between Grand & Howard Streets



HIGHLIGHTS

For Lease
Type: Retail
Total SF: 6,500
Market: SoHo

CONTACT

Sam Polese
212-529-7426
spolese@thorequities.com

TOTAL SF: 6,500 SF
GROUND: 4,000 SF
LOWER LEVEL: 2,500 SF

FRONTAGE:
25'

UNPARALLELED LOCATION

25 Mercer St. is designed for the trendiest of tenants. Nestled between Grand and Howard Streets, the beautiful space offers a clean, contemporary cast-iron façade complemented by high ceilings and windows.

HEAVILY TRAFFICKED SHOPPING DISTRICT

Mercer Street is filled with chic, boutique, trendy and irresistible retail shops. Retail locations in this area are in very high demand and rarely become available.

HIGH-DENSITY TRADE AREA

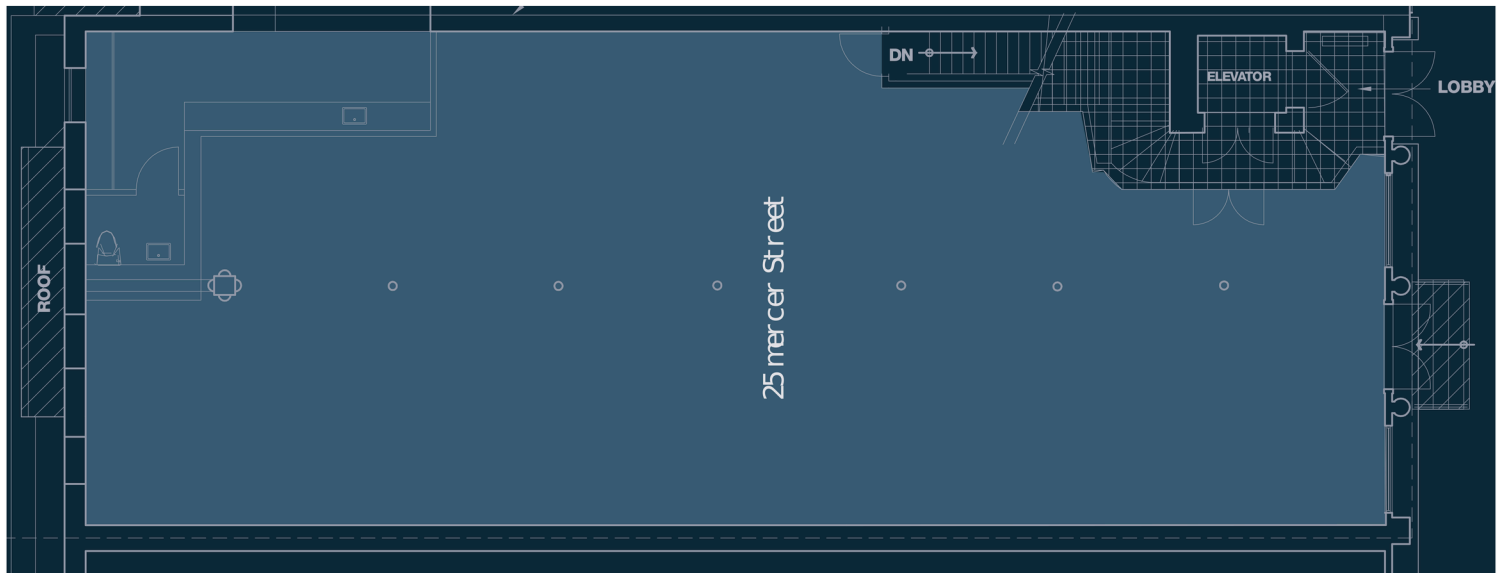
SoHo is one of New York City's signature shopping destinations. The neighborhood is also one of the city's premier luxury residential neighborhoods, achieving prices that rival the Upper East Side and Upper West Side of Manhattan.

EXCELLENT RETAIL OPPORTUNITY

25 Mercer St. boasts 6,500 SF across two levels. With 25 feet of frontage on Mercer Street, it would be impossible for a consumer to pass by without noticing this beautiful storefront.

25 Mercer Street

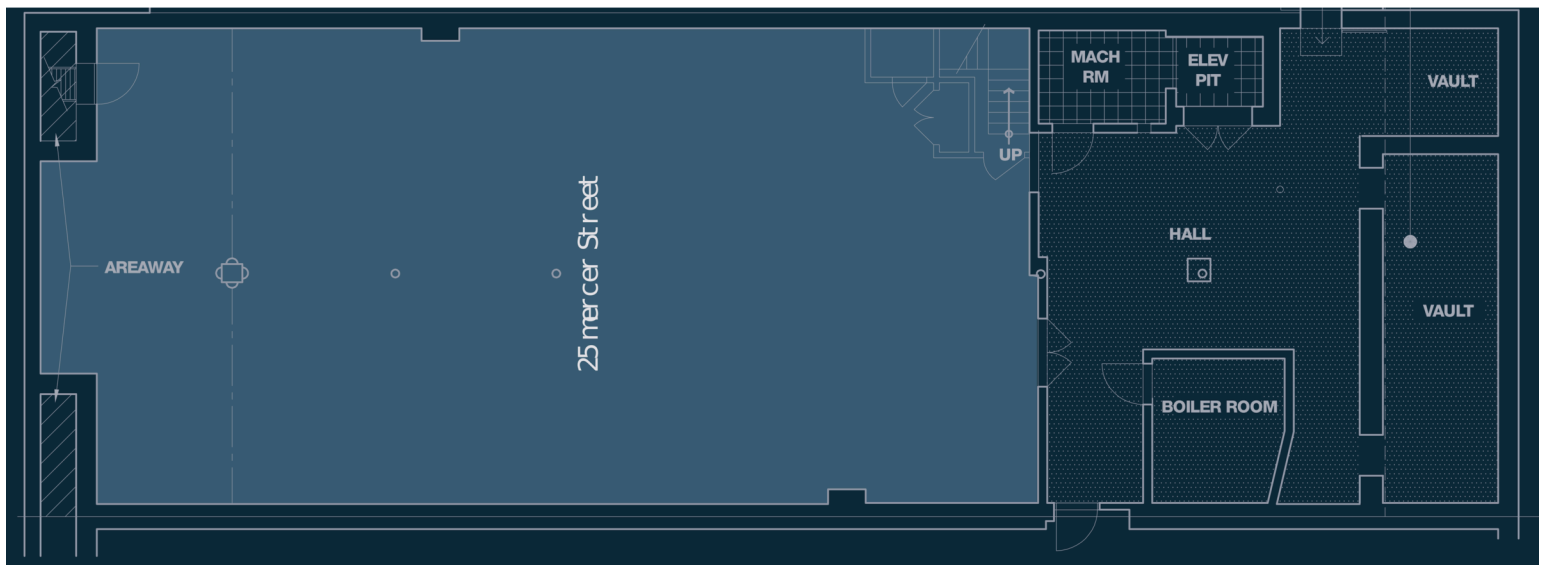
25 Mercer Street, New York, NY 10013
West Block between Grand & Howard Streets



Ground Floor Available 4,000 SF

25 Mercer Street

25 Mercer Street, New York, NY 10013
West Block between Grand & Howard Streets



Lower Level Available 2,500 SF