

145 NORTH ROBERTSON BLVD.

LOS ANGELES, CALIFORNIA

RETAIL FOR LEASE



KAZUKO Y. MORGAN
Vice Chairman
Lic. # 01070005
T 415.773.3546
kazuko.morgan@cushwake.com

CARINE MAMANN
Associate Director
Lic. # 01734150
T 310.595.2235
carine.mamann@cushwake.com

EXCLUSIVE AGENT
 **CUSHMAN & WAKEFIELD®**
RETAIL SERVICES
Lic. #00616335

FLOOR PLAN / PREMISES

PREMISES:

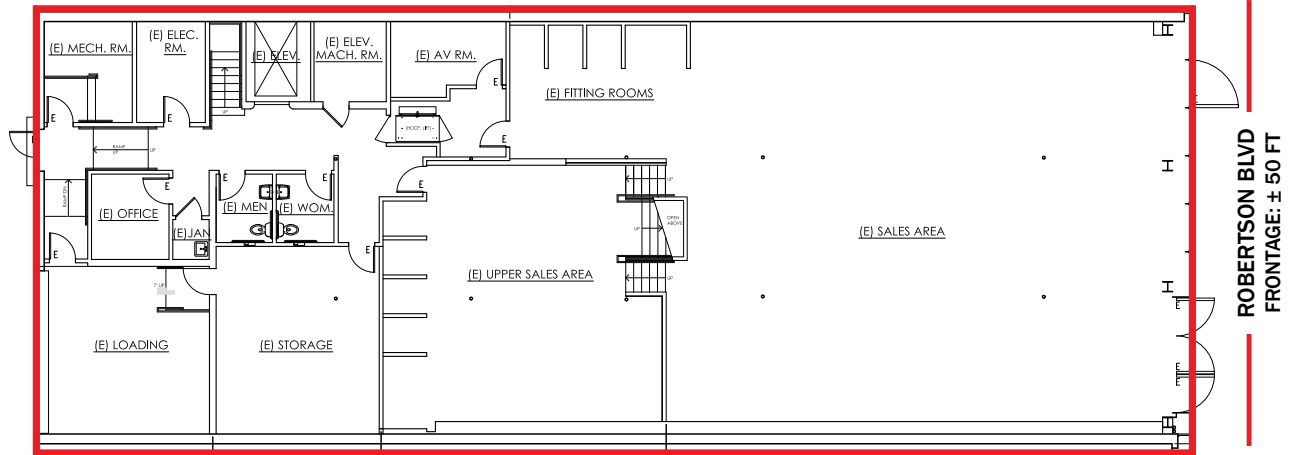
Ground ± 6,940 SF
Second Floor + 6,940 SF
Total ± 13,880 SF

FRONTAGE

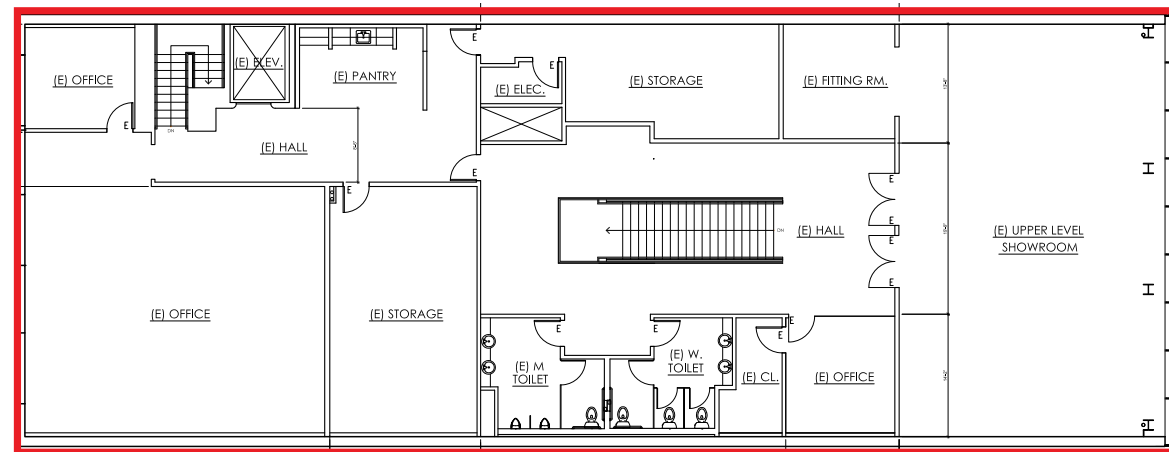
± 50 Feet



GROUND FLOOR

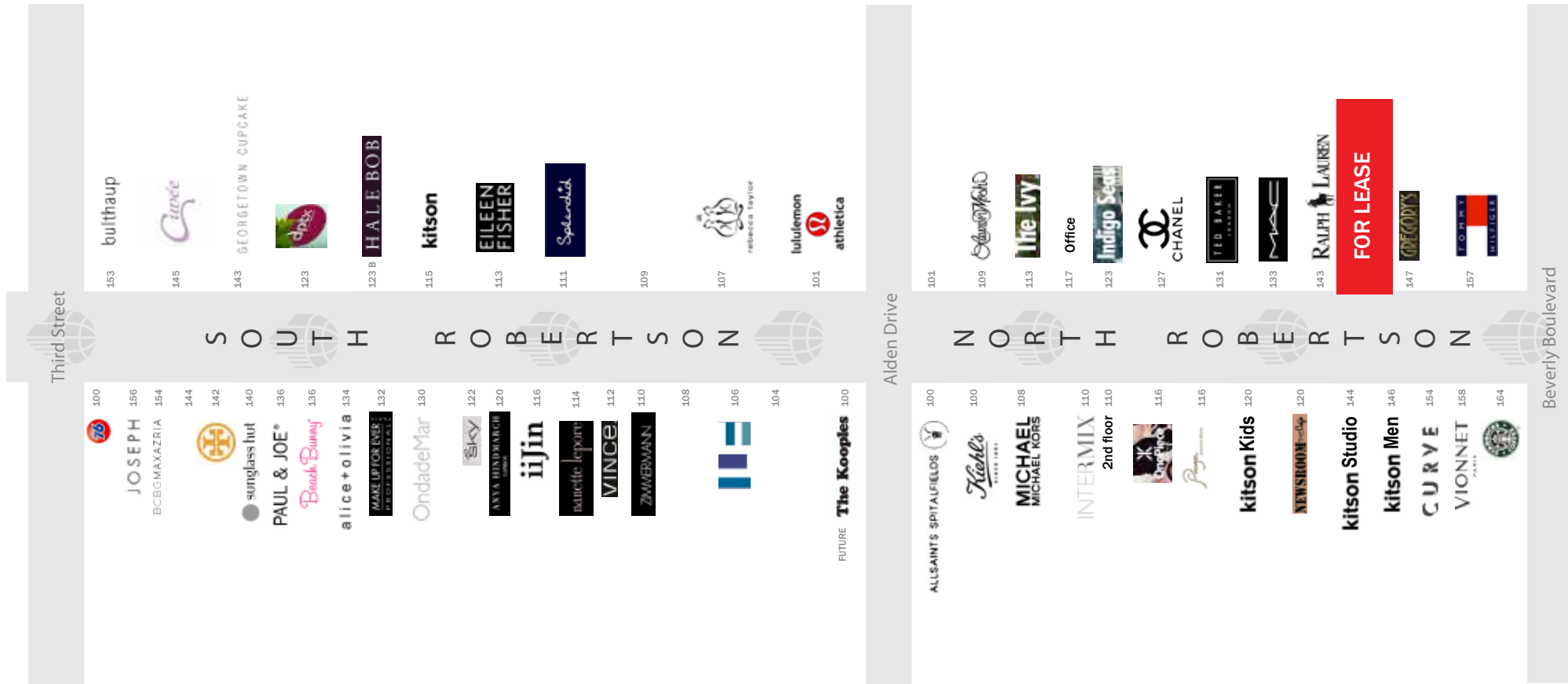


SECOND FLOOR



LOCATION MAP

- Robertson Boulevard has recently become a haven for celebrities. This is partially due to a large influx of unique boutiques and designer clothing & jewelry stores such as Agnes B, Curve, Lisa Kline, Kitson Boutique, Fendi, Armani Exchange, Dolce & Gabbana, Ralph Lauren, Ted Baker, M-AC, Chanel, Intermix, Tory Burch, and Beach Bunny Swimwear which is a mecca for many celebrity shoppers. In addition, several popular celebrity-infused eateries are located on Robertson Boulevard, such as The Ivy and Newsroom Cafe. The Kabbalah Centre is also located on the street.



"No warranty or representation, express or implied, is made as to the accuracy of the information contained herein, and same is submitted subject to errors, omissions, change of price, rental or other conditions, withdrawal without notice, and to any special listing conditions imposed by the principals."

NEIGHBORING TENANTS

