



245
FIFTH

HIGH-END CREATIVE,
HIGH-DENSITY OFFICE
ENVIRONMENT

WE DELIVER BUILT TO SUIT FROM 6,192 SF- 60,700 SF

- > Pre-builts available
- > Usable terraces
- > Design services available
- > Five to Ten year terms
- > 24/7 access and security
- > Prime location on 5th Avenue in close proximity to all public transportation; and Madison Square Park, Penn Station, Grand Central, Flatiron and some of the most sought-after hotels such as Ace, Gansevoort, Eventi and No-Mad.



COMMISSIONS PAID ON SIGNING

FOR MORE INFORMATION OR TO ARRANGE FOR AN INSPECTION PLEASE CONTACT:

Christel Engel
EXECUTIVE MANAGING DIRECTOR
(212) 716-3567
christel.engel@colliers.com

Whitney Anderson
DIRECTOR
(212) 716-3508
whitney.anderson@colliers.com

Michael Baraldi
ASSOCIATE
(212) 716-3505
michael.baraldi@colliers.com

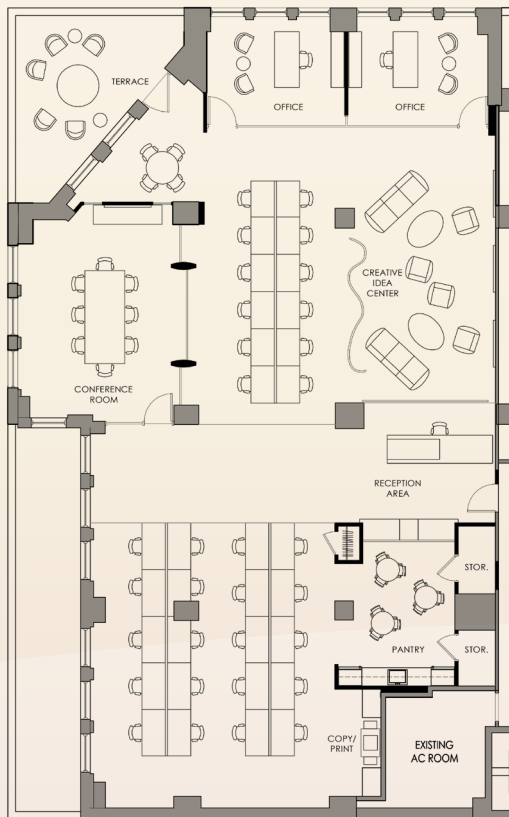
No representation is made to the accuracy of the information furnished herein and same is submitted subject to errors, omission, change of prices, rental, or other conditions, prior sale, lease, and/or withdrawal without notice. The furnishing of this information shall not be deemed a hiring. A commission in accordance with our principal's schedule of rates and conditions will be paid to the procuring Broker executing owner's brokerage agreement who fully consummates a lease upon terms and conditions acceptable to our principal.



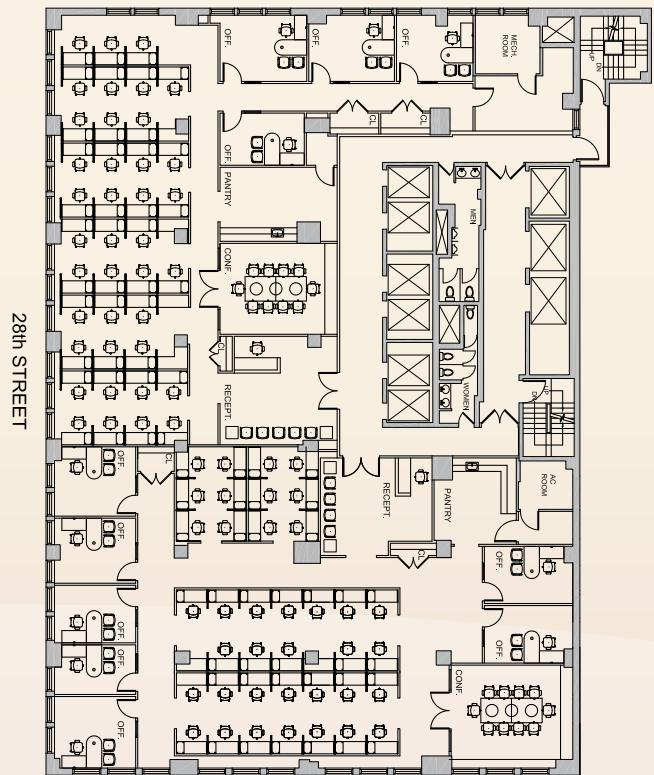


HIGH-END CREATIVE, HIGH-DENSITY OFFICE ENVIRONMENT

TEST-FIT 19TH FLOOR: 6,192 SF



TOWER FLOOR: 13,627 SF - DIVISIBLE



NOT TO SCALE

FOR MORE INFORMATION OR TO ARRANGE FOR AN INSPECTION PLEASE CONTACT:

Christel Engel
EXECUTIVE MANAGING DIRECTOR
(212) 716-3567
christel.engel@colliers.com

Whitney Anderson
DIRECTOR
(212) 716-3508
whitney.anderson@colliers.com

Michael Baraldi
ASSOCIATE
(212) 716-3505
michael.baraldi@colliers.com

No representation is made to the accuracy of the information furnished herein and same is submitted subject to errors, omission, change of prices, rental, or other conditions, prior sale, lease, and/or withdrawal without notice. The furnishing of this information shall not be deemed a hiring. A commission in accordance with our principal's schedule of rates and conditions will be paid to the procuring Broker executing owner's brokerage agreement who fully consummates a lease upon terms and conditions acceptable to our principal.



245
FIFTH



SUITE 901: 3,452 SF

