

# BROOKLYN

FEATURING THOR'S PREMIER PROPERTIES IN  
BROOKLYN'S MOST POPULAR NEIGHBORHOODS



THOR EQUITIES



# TABLE OF CONTENTS

**209 SMITH STREET**  
COBBLE HILL

**292 ATLANTIC AVENUE**  
COBBLE HILL

**525-541 ATLANTIC AVENUE**  
BOREUM HILL

**519 FULTON STREET**  
DOWNTOWN BROOKLYN

**CONEY ISLAND**

**280 RICHARDS**  
RED HOOK

**93 N. NINTH STREET**  
WILLIAMSBURG

**100 N. THIRD STREET**  
WILLIAMSBURG





# 209 SMITH STREET COBBLE HILL

## ABOUT THIS PROPERTY

- LOCATED ON THE CORNER OF SMITH AND BALTIC STREETS
- PRIME LOCATION ON BROOKLYN'S FAMED "RESTAURANT ROW"
- CLOSE PROXIMITY TO 12 SUBWAY LINES

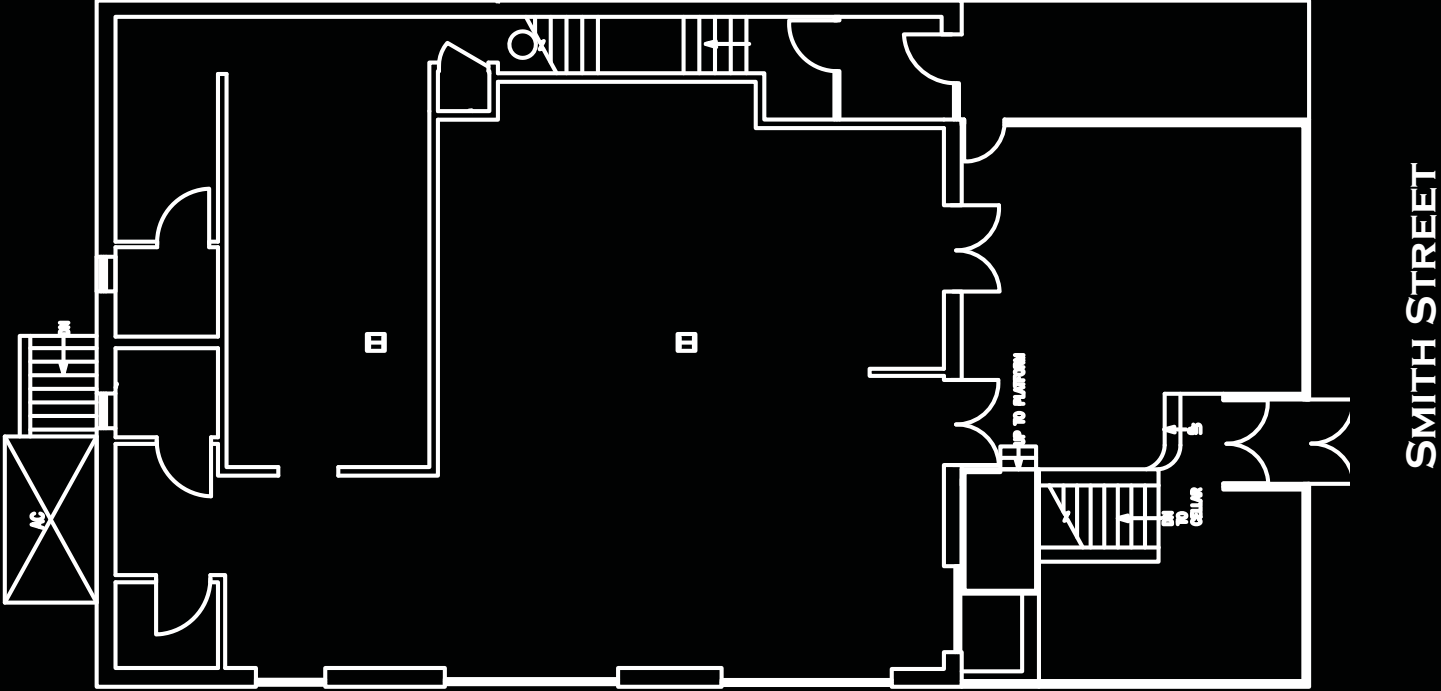
## FEATURES

TOTAL SF:	5,600 SF
GROUND FLOOR:	2,400 SF
LOWER LEVEL:	2,400 SF
PATIO:	800 SF
FRONTAGE:	40'



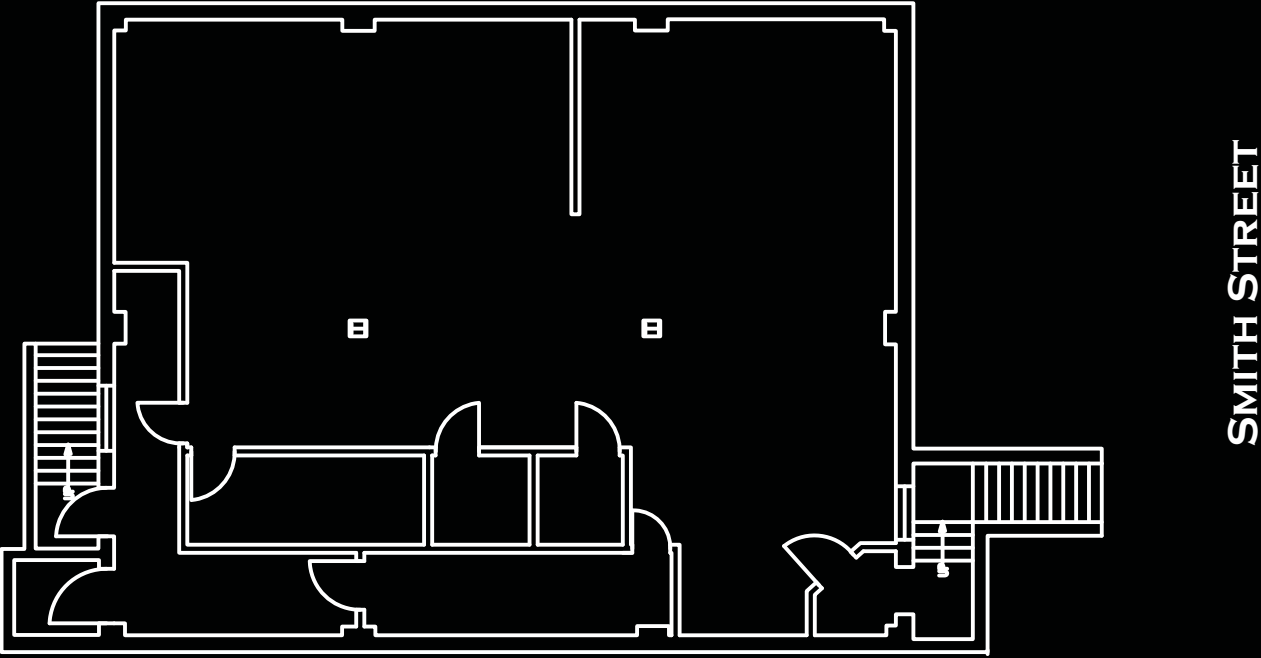
**209 SMITH STREET  
FLOOR PLANS**

**GROUND FLOOR**



**BALTIC STREET**

**LOWER LEVEL**



**BALTIC STREET**





292

ATLANTIC AVENUE

WWW.292ATLANTIC.COM

### ABOUT THIS PROPERTY

- CORNER OF ATLANTIC AVENUE AND SMITH STREET
- 2 LEVELS
- NEIGHBORING THE BROOKLYN BOTANICAL GARDENS AND BARCLAYS CENTER

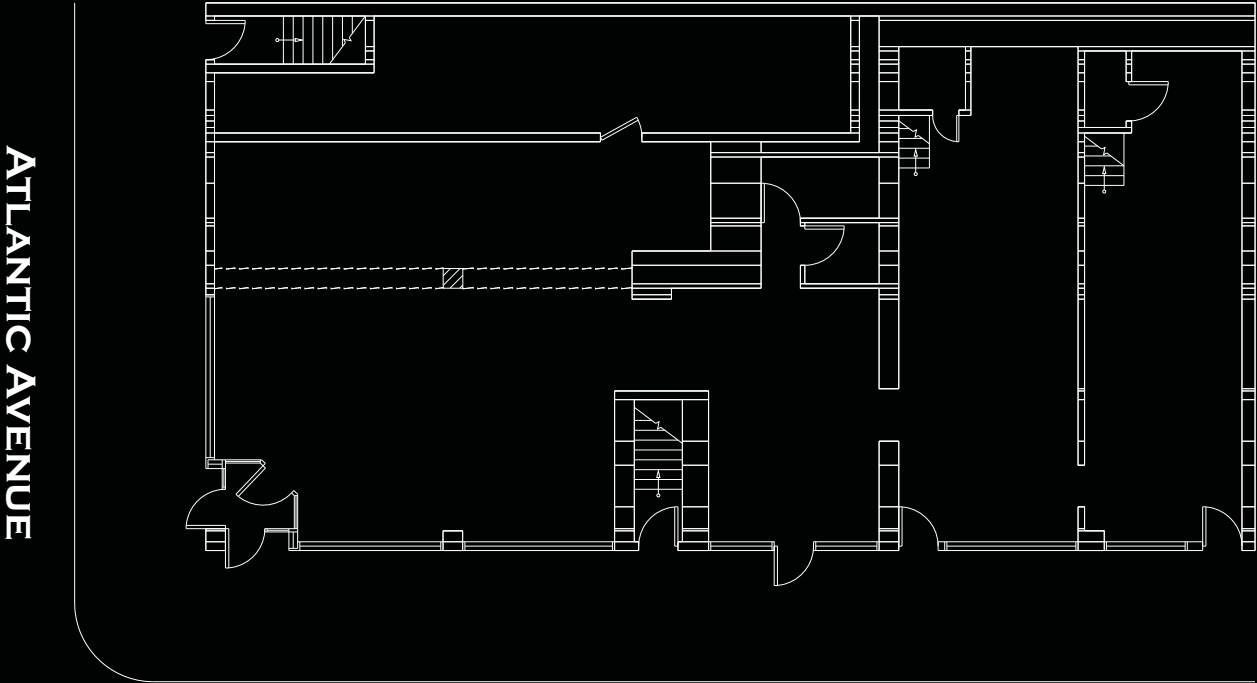
### FEATURES

TOTAL SF:	4,000 SF
GROUND FLOOR:	2,000 SF
LOWER LEVEL:	2,000 SF
TOTAL FRONTAGE:	120 SF
ATLANTIC AVENUE:	40'
SMITH STREET:	80'

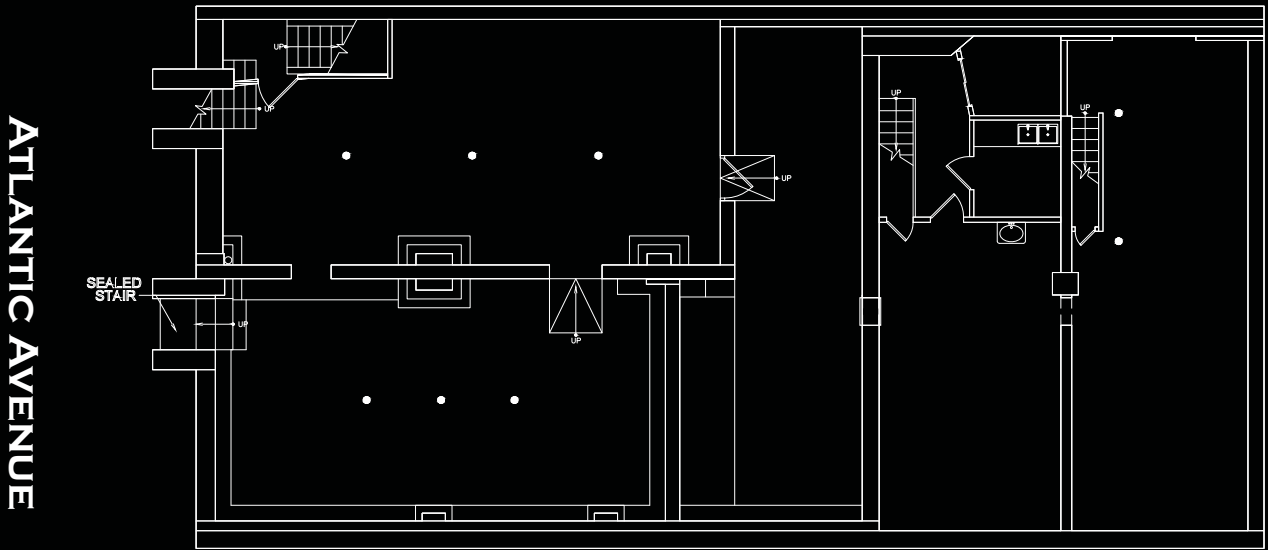


292 ATLANTIC AVENUE  
FLOOR PLANS

GROUND FLOOR



LOWER LEVEL





# 525-541 ATLANTIC AVENUE



## ABOUT THIS PROPERTY

- LOCATED BETWEEN 3RD AND 4TH STREETS
- 9 SHOPS WITH 2 LEVELS EACH
- UP AND COMING BOREUM HILL NEIGHBORHOOD

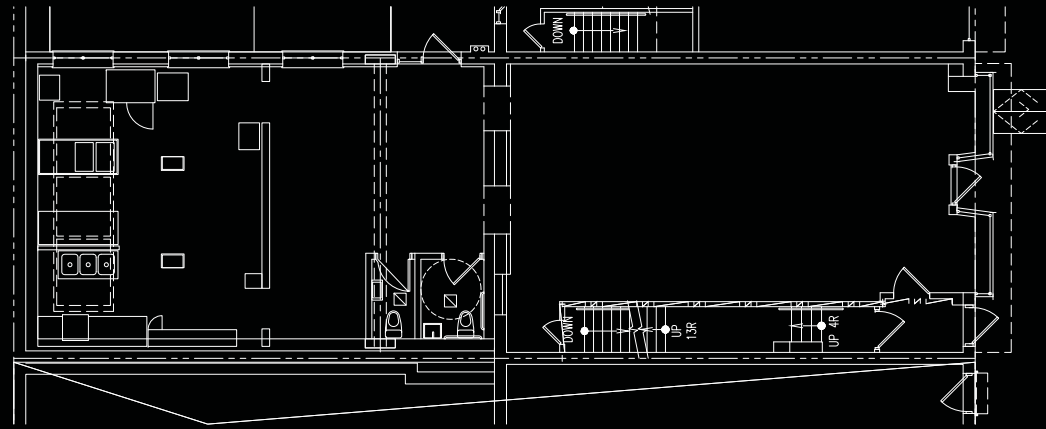
## FEATURES

TOTAL SF:	32,000 SF
CEILING HEIGHTS:	15'
STORE FRONTS:	9 TOTAL

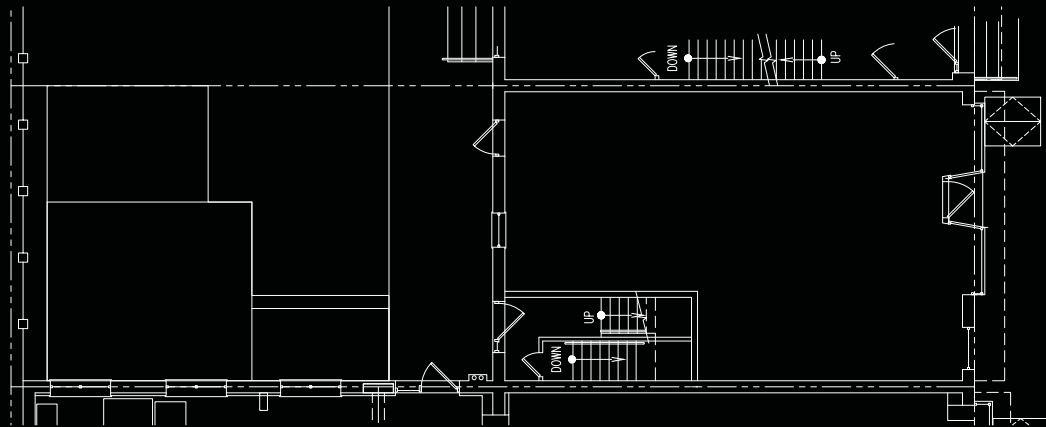


**525-541  
ATLANTIC AVENUE  
FLOOR PLANS**

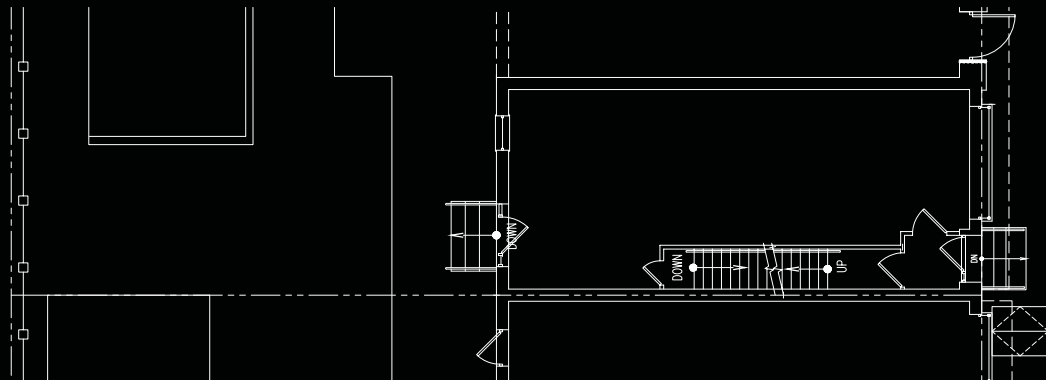
**525**



**527**

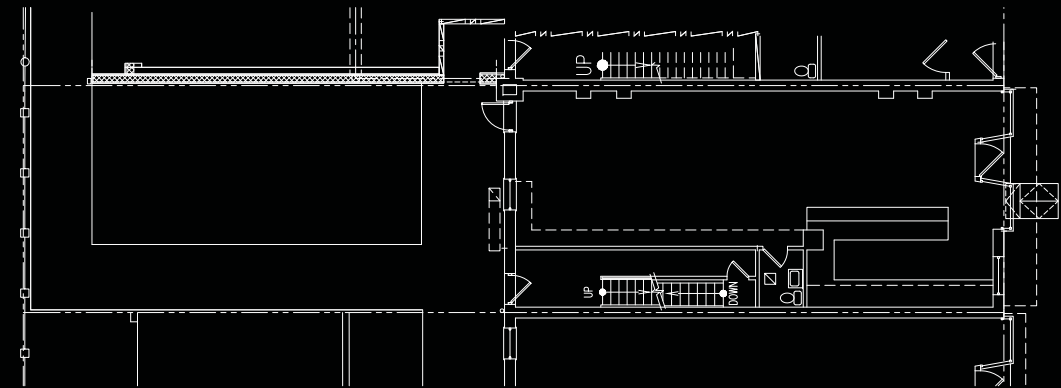


**529**

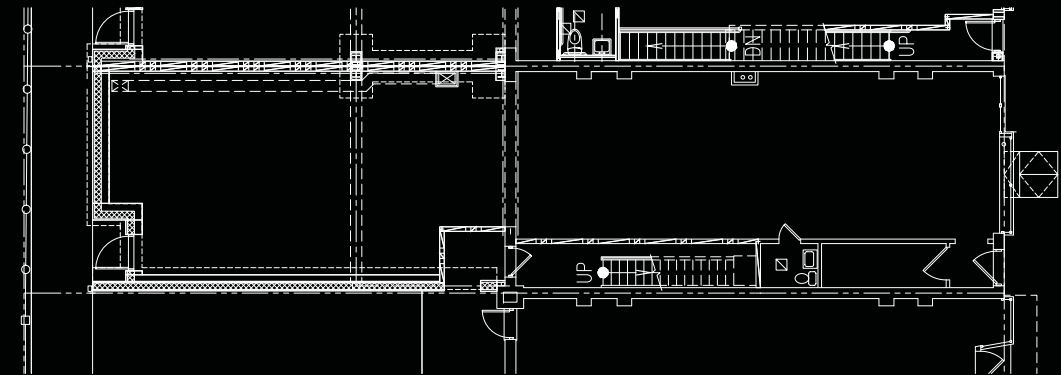


**ATLANTIC AVENUE**

**531**

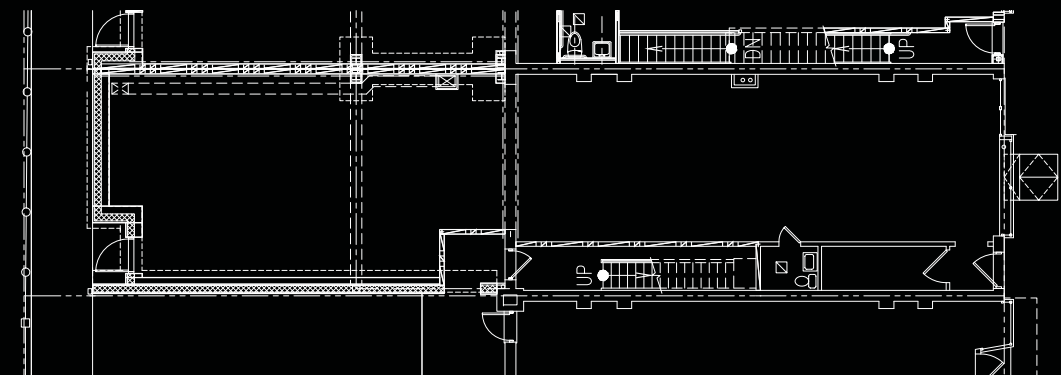


**533**



**ATLANTIC AVENUE**

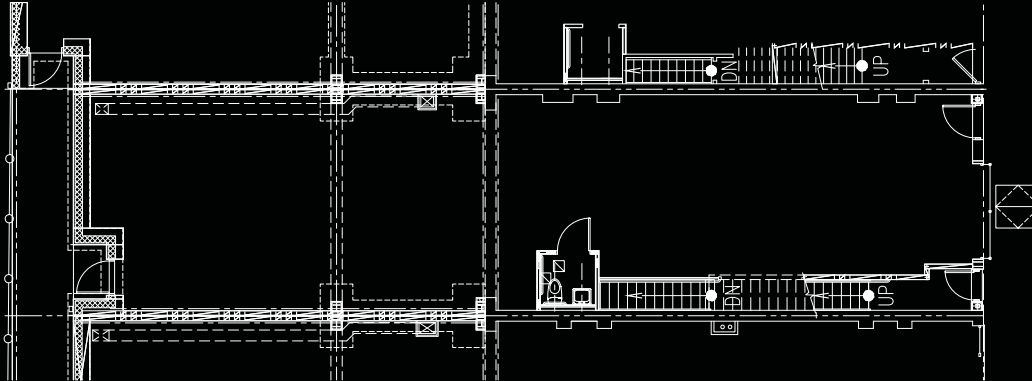
**535**



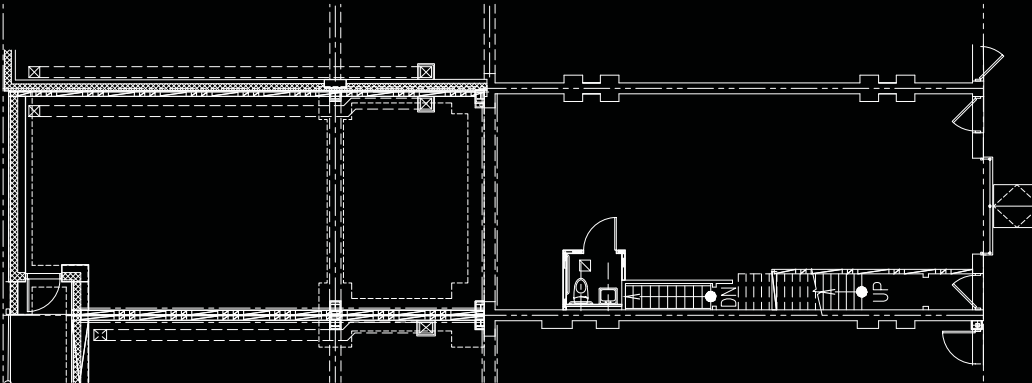


# 525-541 ATLANTIC AVENUE FLOOR PLANS

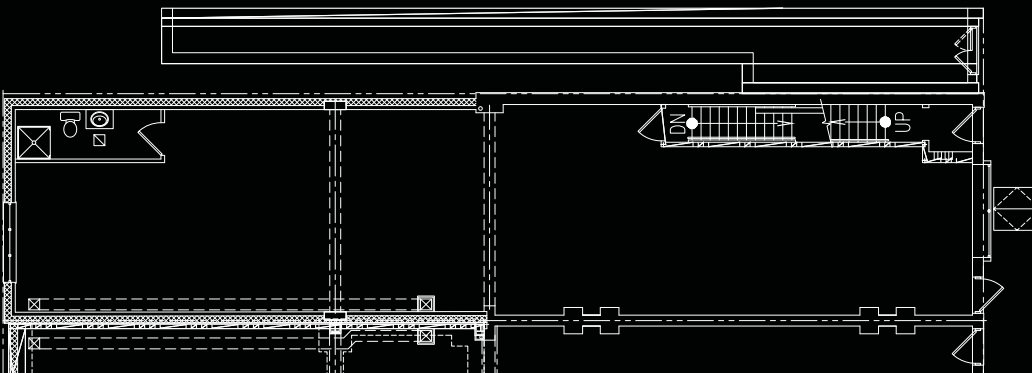
537



539



541



ATLANTIC AVENUE





# 519 FULTON STREET DOWNTOWN BROOKLYN

## ABOUT THIS PROPERTY

- LOCATED ON THE CORNER OF FULTON STREET AND DUFFIELD
- 4 LEVELS
- NEIGHBORING RETAILERS INCLUDE ARMANI EXCHANGE, H&M, NORDSTROM, SWAROVSKI, AND MACY'S

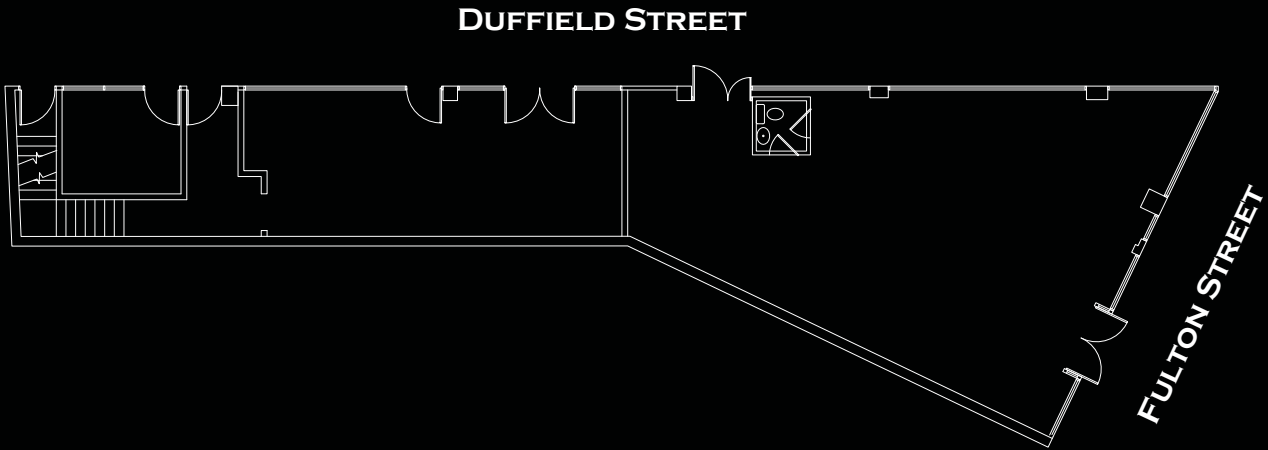
## FEATURES

TOTAL SF:	8,800 SF
GROUND FLOOR:	2,200 SF
LOWER LEVEL:	2,200 SF
TOTAL FRONTAGE:	145'
FULTON STREET:	35'
DUFFIELD STREET:	110'

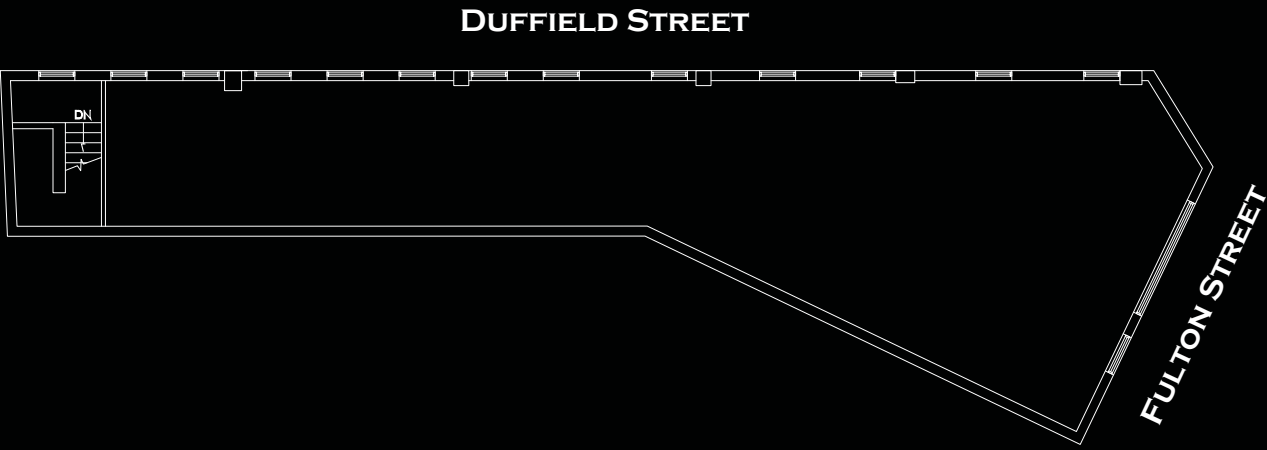


519 FULTON STREET  
FLOOR PLANS

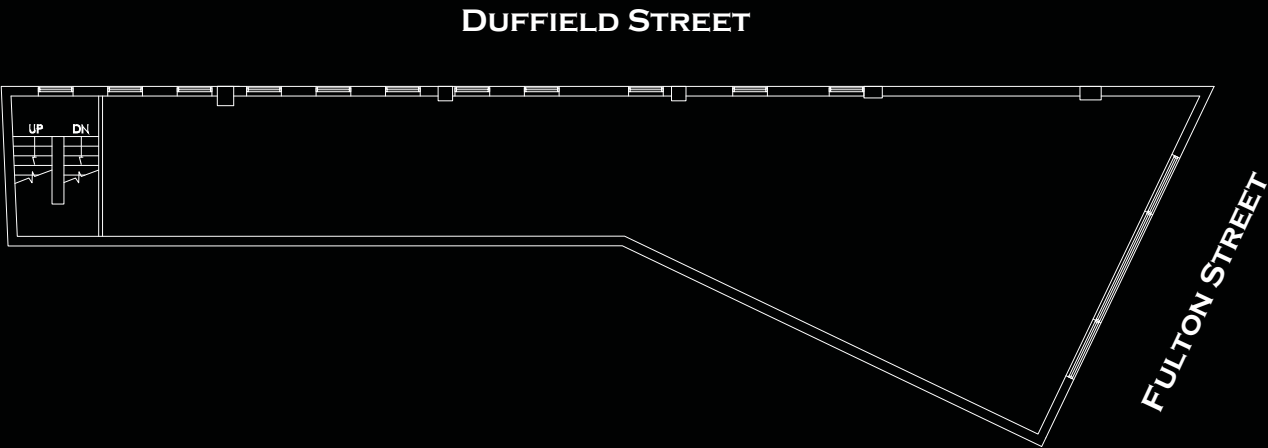
GROUND FLOOR



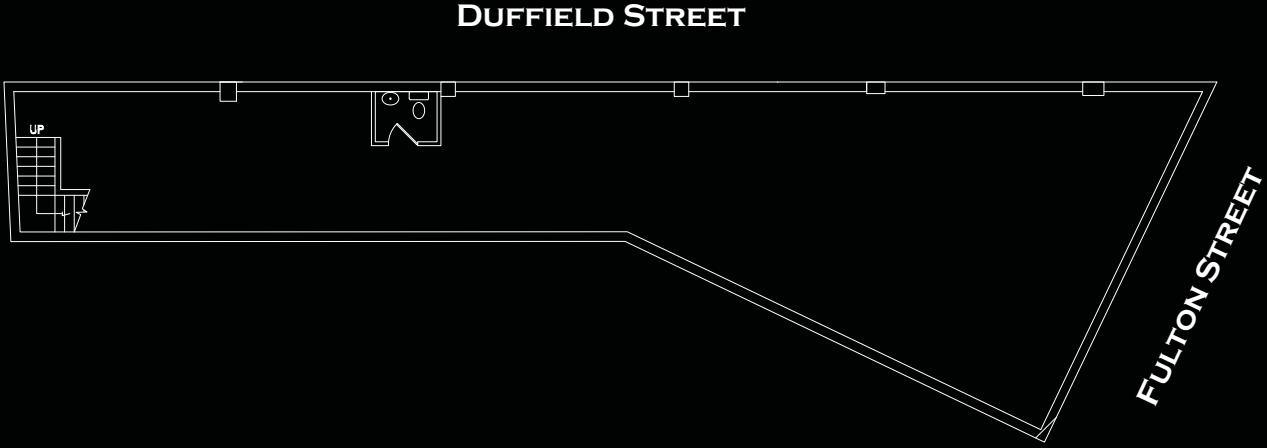
THIRD FLOOR



SECOND FLOOR



LOWER LEVEL







# CONEY ISLAND

WWW.THORCONEYISLAND.COM

1232 SURF AVENUE & 3015 STILLWELL AVENUE



1218 SURF AVENUE



1232 SURF AVENUE & 3015 STILLWELL AVENUE ALONG STILLWELL

## ABOUT THIS PROPERTY

- VARIOUS OPPORTUNITIES AVAILABLE ALONG STILLWELL AND SURF AVENUES
- 1232 SURF AVENUE AND 3015 STILLWELL AVENUE ARE THE FIRST RETAIL-ONLY BUILDINGS IN CONEY ISLAND IN DECADES
- 13 MILLION PEOPLE VISIT CONEY ISLAND BEACH EVERY SEASON INCLUDING OVER 100,000 ON JULY 4TH

## FEATURES

### SURF & STILLWELL AVENUE

TOTAL SF: 15,000 SF  
FRONTAGE: 340'

### 1218 SURF AVENUE

TOTAL SF: 10,000 SF  
FRONTAGE: 50'



# CONEY ISLAND FLOOR PLANS

## 1232 SURF AVENUE & 3015 STILLWELL AVENUE

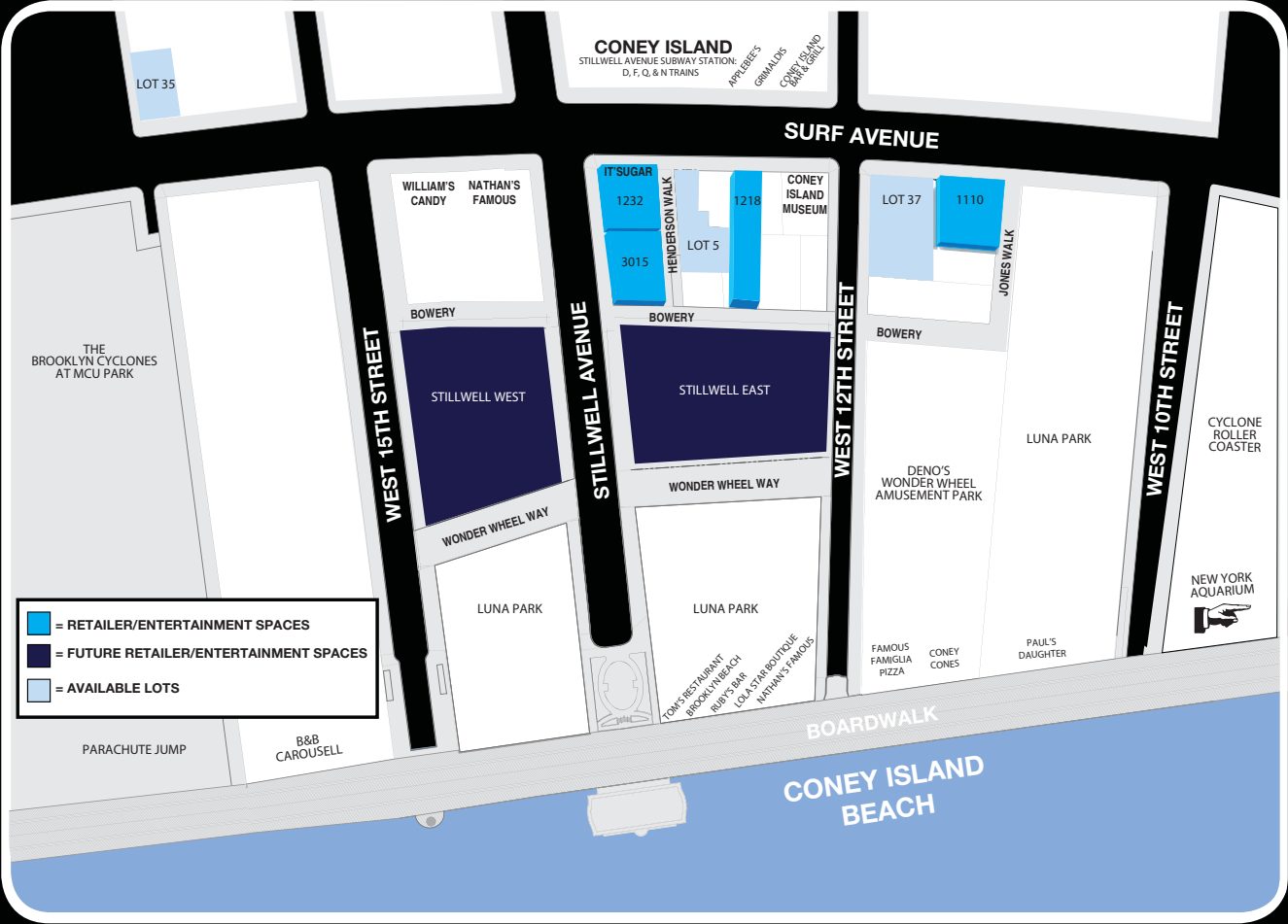
SURF AVENUE



STILLWELL AVENUE

BOWERY AVENUE

# AERIAL MAP







# 280 RICHARDS RED HOOK

## ABOUT THIS PROPERTY

- DEVELOPMENT SITE ALONGSIDE IKEA AND FAIRWAY MARKET
- BECOMING A THRIVING COMMUNITY OF ARTS STUDIOS, PARKS, BOUTIQUES, RESTAURANTS AND MUSEUMS

## FEATURES

TOTAL SF:	400,000 SF
FRONTAGE:	452'
WATERFRONT ESPLANADE:	40'



93  
N. NINTH STREET  
WILLIAMSBURG

RETAIL



RETAIL



### ABOUT THIS PROPERTY

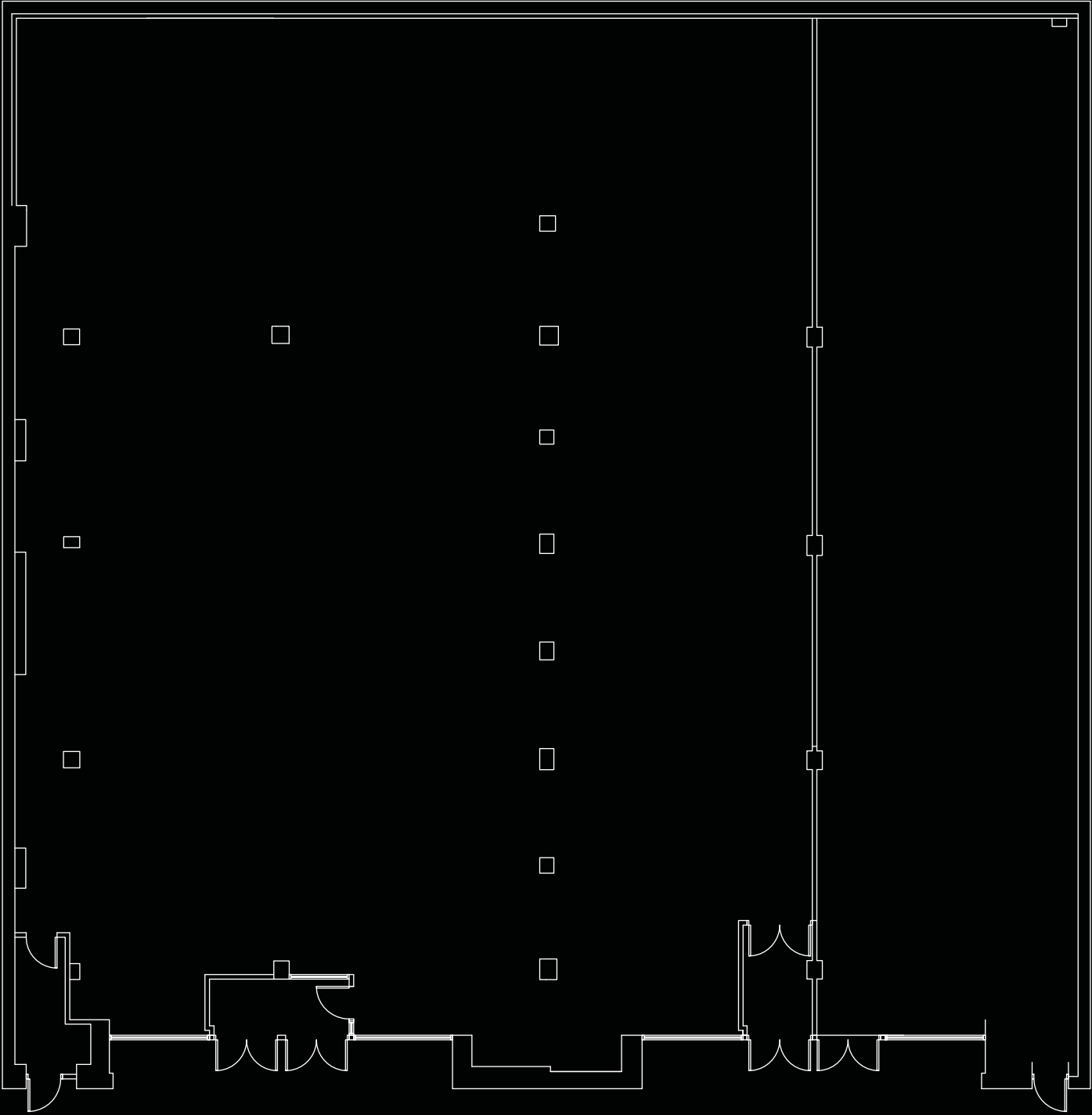
- BEAUTIFUL EXISTING GLASS WINDOW FRONTAGE ON NINTH STREET
- OPEN LAYOUT PLAN
- VIEWS OF THE EAST RIVER

### FEATURES

TOTAL SF:	12,000 SF
TOTAL FRONTAGE:	100'



93 N. NINTH STREET  
FLOOR PLANS



N. NINTH STREET





# 100 N. THIRD STREET WILLIAMSBURG

## JAMES & CO

### ABOUT THIS PROPERTY

- ONE LEVEL RETAIL CONDOMINIUM
- OPEN LAYOUT PLAN
- BOASTING BRAND NEW CONSTRUCTION WITH MINIMAL NEED FOR UPDATES
- AT THE BASE OF NEWLY RENOVATED RESIDENTIAL CONDOMINIUMS

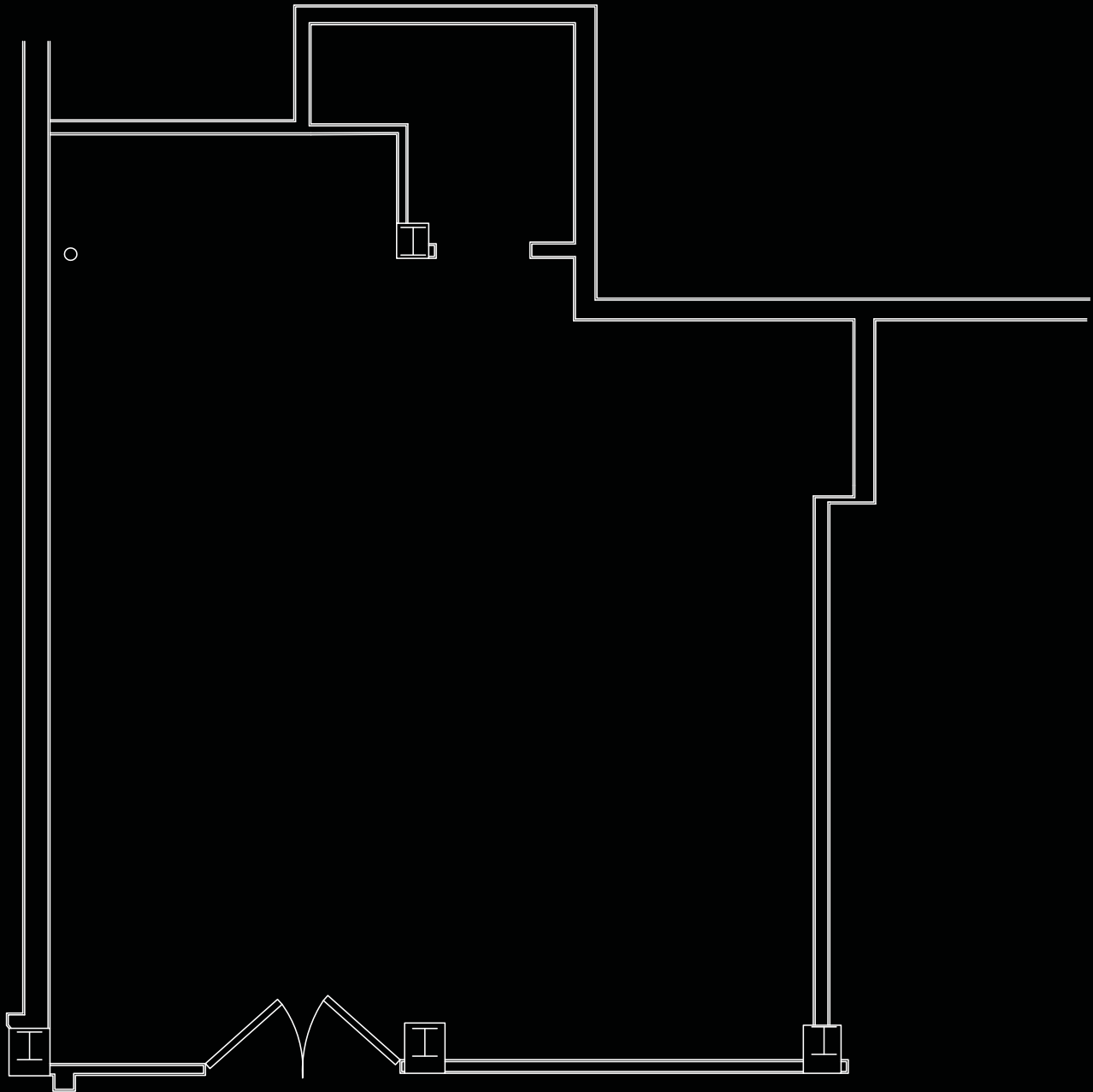
### FEATURES

TOTAL SF:

900 SF



# 100 N. THIRD STREET FLOOR PLANS



N. THIRD STREET





**LEASING CONTACT:**  
**GLENN VOGEL**  
**212.529.7427**  
**GVOGEL@THOREQUITIES.COM**

THOR EQUITIES is a leader in urban real estate development, leasing and management, pursuing premier retail and mixed-use assets in high-density areas. Thor Equities provides the best possible “High Street” retail and mixed-use building environments within the urban landscape across the United States, Latin America and Europe - all while delivering attractive, risk-adjusted returns to investors.