

139 FIFTH AVENUE

(BETWEEN 20TH & 21ST STREETS)



FLOOR/AREA: Entire 6th Floor - 5,500 RSF

Entire 5th Floor - 5,500 RSF

Total: 11,000 RSF

(Floors can be leased separately)

POSSESSION: Immediate

TERM: 3-10 Years

ASKING RENT: Upon Request

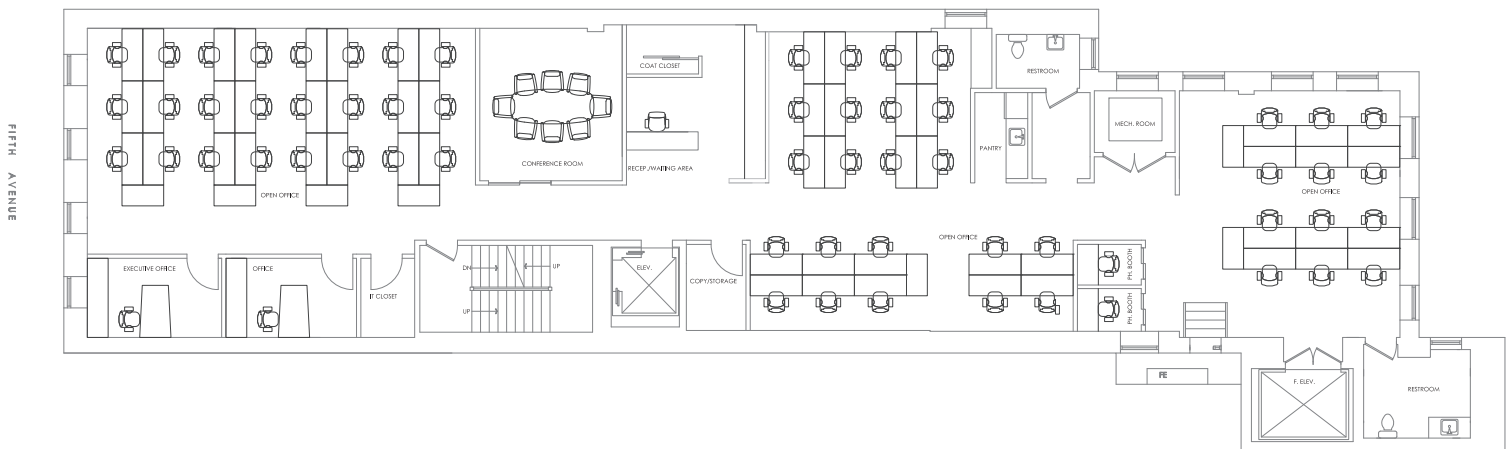
FEATURES:

- Built Space
- 6th Floor - 2 skylights
- Wood Floors
- Exposed Ceilings
- Above standard ceiling height
- Interconnecting stairwell
- Tenant Controlled A/C
- 24/7 access
- Between Madison Square Park and Union Square
- Close proximity to:
F, L, M, Path, N, Q, R, 4, 5 & 6 trains

FOR MORE INFORMATION, PLEASE CONTACT:
Adam Rappaport Vice President, Office Leasing
(212) 432-3030 | arappaport@thorequities.com
www.thorequities.com

Although all information furnished regarding property for sale, rental or financing is from sources deemed reliable, such information has not been verified, and no express representation is made nor is any to be implied as to the accuracy thereof and it is submitted subject to error, omissions, change of price, rental or other conditions, prior sale, lease or financing, or withdrawal without notice.

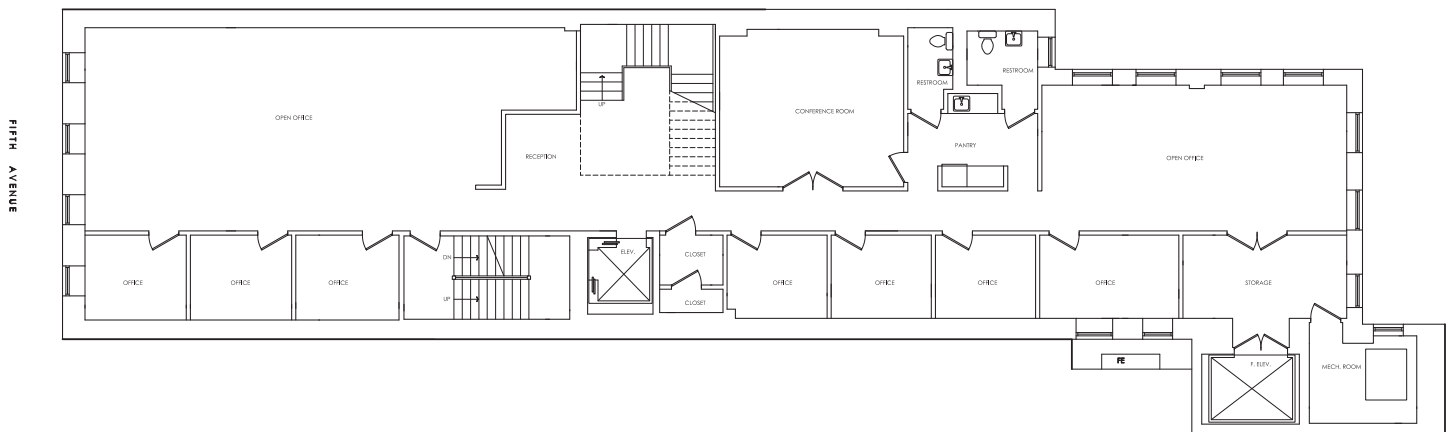
PROPOSED LAYOUT



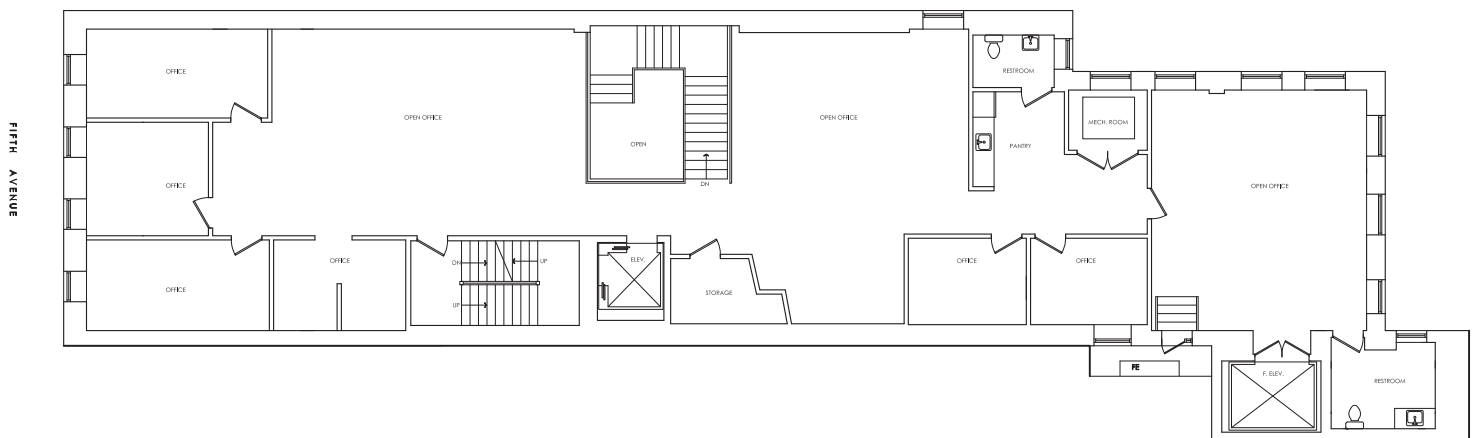
FOR MORE INFORMATION, PLEASE CONTACT:
Adam Rappaport Vice President, Office Leasing
(212) 432-3030 | arappaport@thorequities.com
www.thorequities.com

Although all information furnished regarding property for sale, rental or financing is from sources deemed reliable, such information has not been verified, and no express representation is made nor is any to be implied as to the accuracy thereof and it is submitted subject to error, omissions, change of price, rental or other conditions, prior sale, lease or financing, or withdrawal without notice.

5TH FLOOR EXISTING



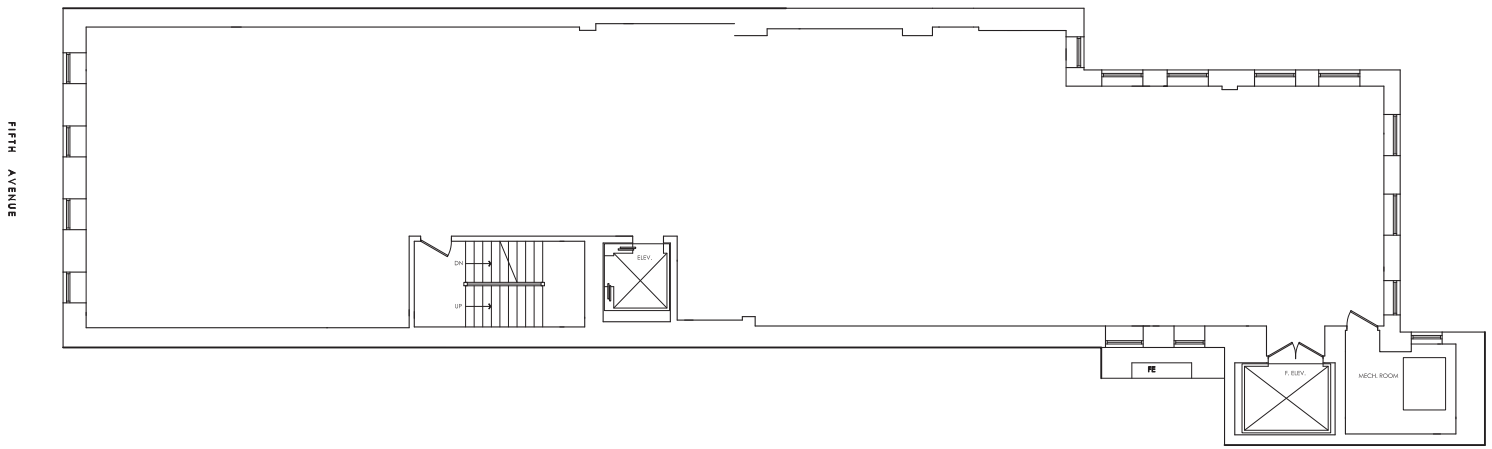
6TH FLOOR EXISTING



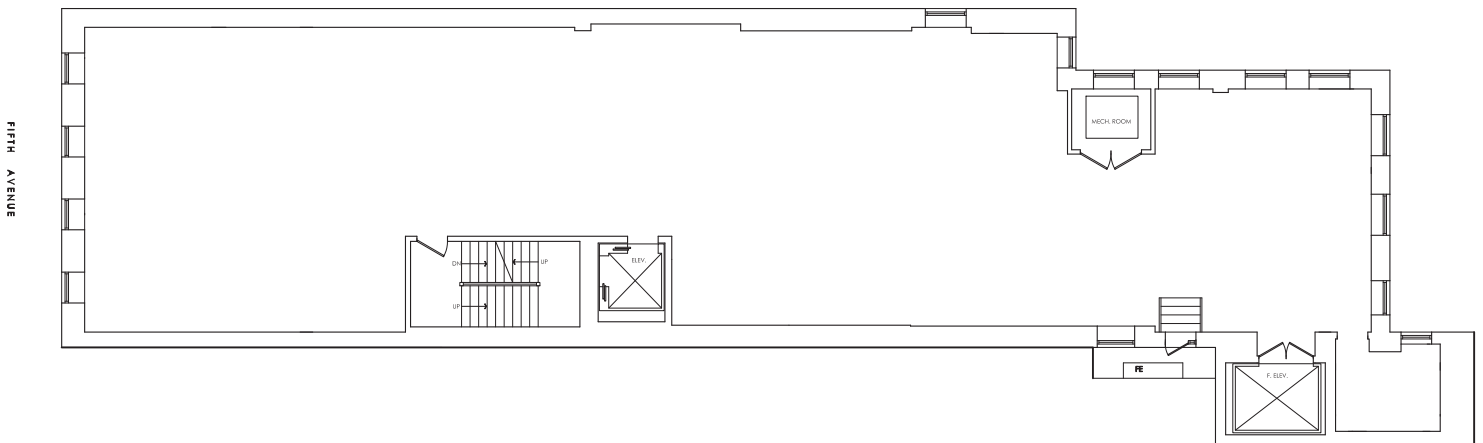
FOR MORE INFORMATION, PLEASE CONTACT:
Adam Rappaport Vice President, Office Leasing
 (212) 432-3030 | arappaport@thorequities.com
www.thorequities.com

Although all information furnished regarding property for sale, rental or financing is from sources deemed reliable, such information has not been verified, and no express representation is made nor is any to be implied as to the accuracy thereof and it is submitted subject to error, omissions, change of price, rental or other conditions, prior sale, lease or financing, or withdrawal without notice.

5TH FLOOR CORE & SHELL



6TH FLOOR CORE & SHELL



FOR MORE INFORMATION, PLEASE CONTACT:
Adam Rappaport Vice President, Office Leasing
(212) 432-3030 | arappaport@thorequities.com
www.thorequities.com

Although all information furnished regarding property for sale, rental or financing is from sources deemed reliable, such information has not been verified, and no express representation is made nor is any to be implied as to the accuracy thereof and it is submitted subject to error, omissions, change of price, rental or other conditions, prior sale, lease or financing, or withdrawal without notice.