

195 BOWERY

NEW YORK, NEW YORK



THOR
EQUITIES
WWW.THOREQUITIES.COM



FEATURES

TOTAL SF	2,100SF
GROUND FLOOR:	1,700SF
LOWER LEVEL:	400SF

FRONTAGE	
BOWERY	25'

HIGHLIGHTS

- TYPE: RETAIL
- TOTAL SF: 2,100SF
- MARKET: BOWERY

ABOUT THIS PROPERTY

UNPARALLELED LOCATION: Ideally situated between Rivington and Spring Streets and adjacent to Nolita, one of the most widely sought after areas of downtown Manhattan, 195 Bowery is a prime retail condominium with ample space.

TRENDY NEIGHBORHOOD: Known for its art and music scene, indie boutiques and posh eateries as well as a plethora of galleries and nightlife, the Lower East Side is a quintessentially trendy New York neighborhood.

HIGH-DENSITY TRADE AREA: The Bowery is strategically placed in the middle of some of the most aesthetically vibrant neighborhoods of New York. Surrounded by small, pedestrian-friendly side streets full of great retailers like Vince and more, it is a magnet for the type of clientele any distinctive retailer would seek out. Named to the New York State Register of Historic Places, the Bowery is a prevalent part of New York's past, present and future.

EXCELLENT RETAIL OPPORTUNITY: With 25' of frontage on Bowery, 1,700 SF on the ground floor and 400 SF on the lower level, 195 Bowery provides space, atmosphere and ample visibility to attract trendsetting shoppers.

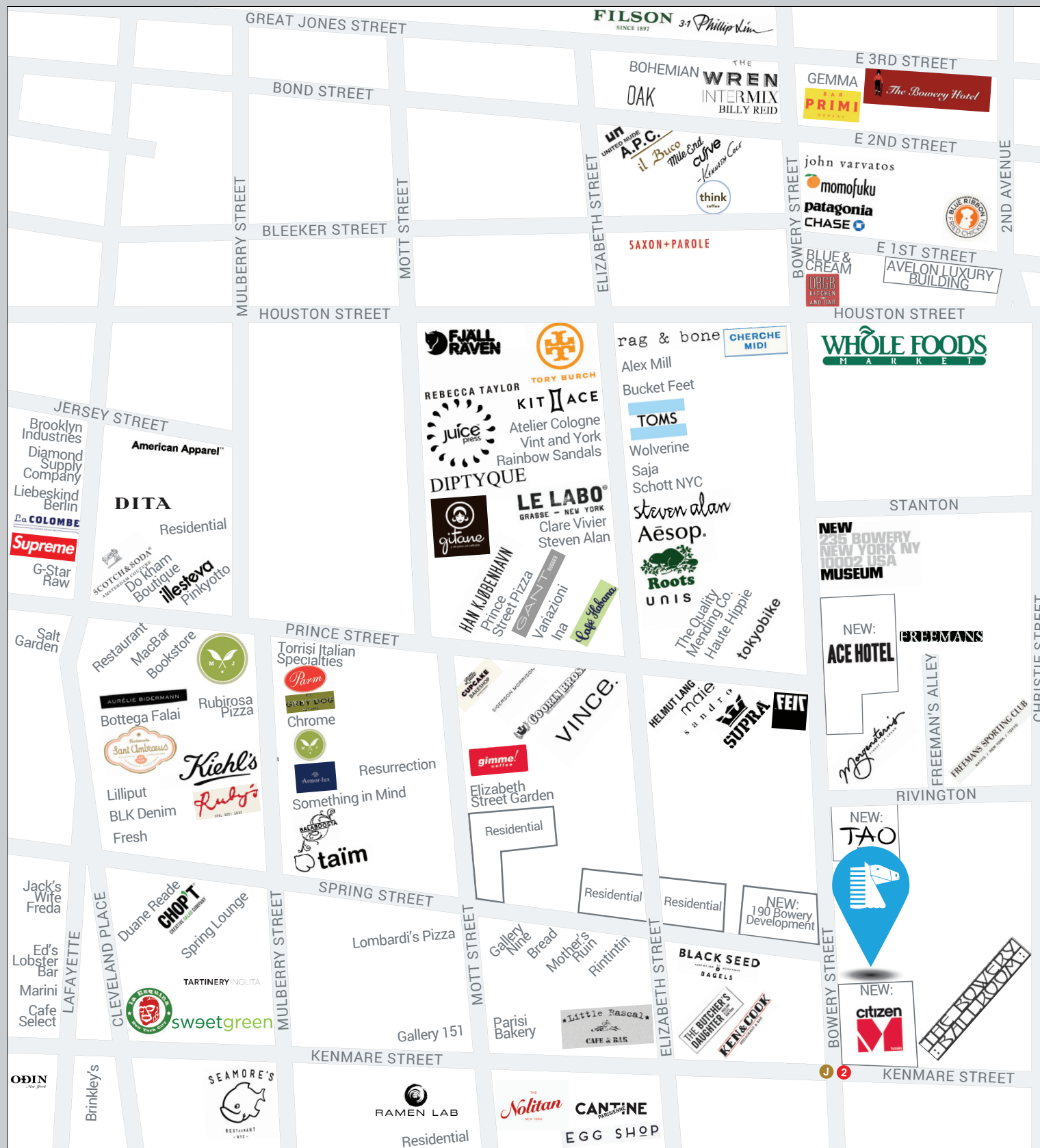
195 BOWERY

NEW YORK, NEW YORK



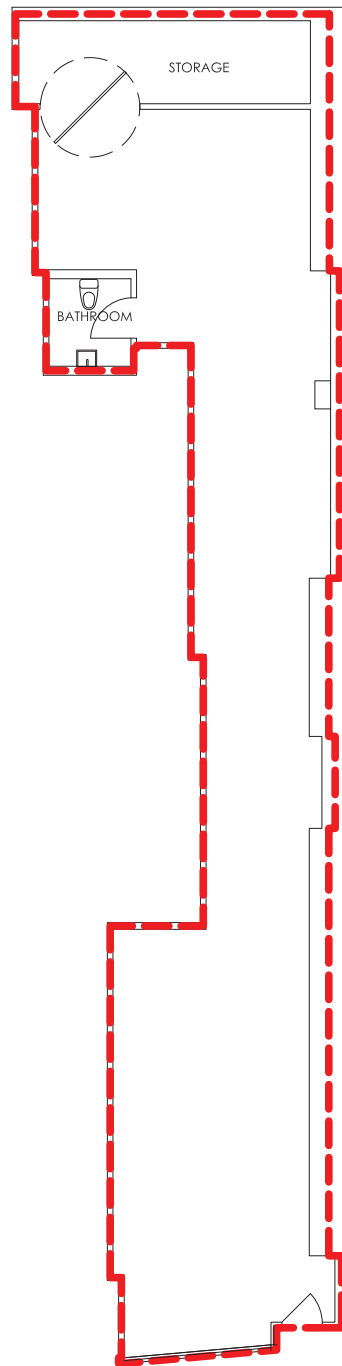
THOR
EQUITIES

WWW.THOREQUITIES.COM



195 BOWERY

NEW YORK, NEW YORK

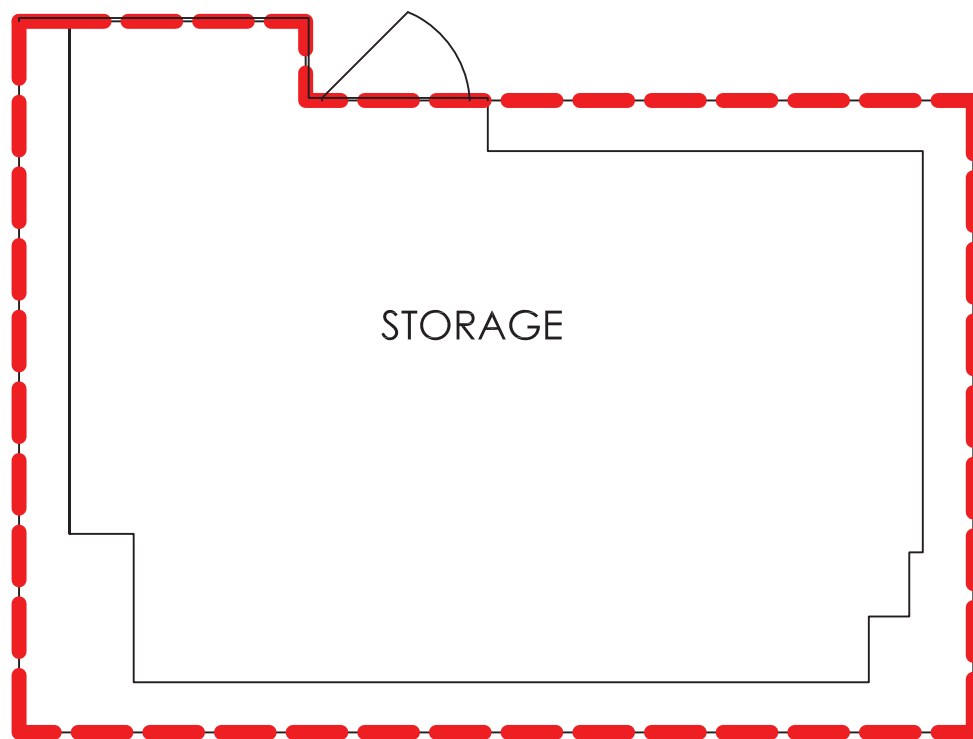


BOWERY

GROUND FLOOR

195 BOWERY

NEW YORK, NEW YORK



LOWER LEVEL