

Thor Equities

25 West 39TH STREET

(BETWEEN FIFTH & SIXTH AVENUES)

RICH HISTORY UNRIVALED FUTURE

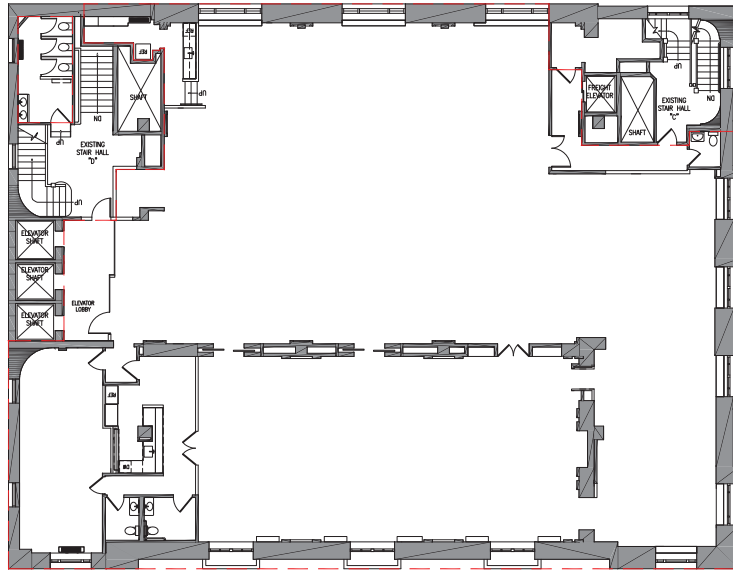
THE ENGINEERING SOCIETIES BUILDING OPENED IN JANUARY 1907 AND WAS BUILT WITH A \$1.5 MILLION GIFT FROM ANDREW CARNEGIE. IT FEATURED A 1,000 SEAT AUDITORIUM AND ONE OF THE LARGEST ENGINEERING LIBRARIES IN THE WORLD. MEMBERS INCLUDED THOMAS EDISON AND NIKOLA TESLA, AND IT SERVED AS A HUB FOR ENGINEERING ADVANCEMENT FOR OVER HALF A CENTURY.



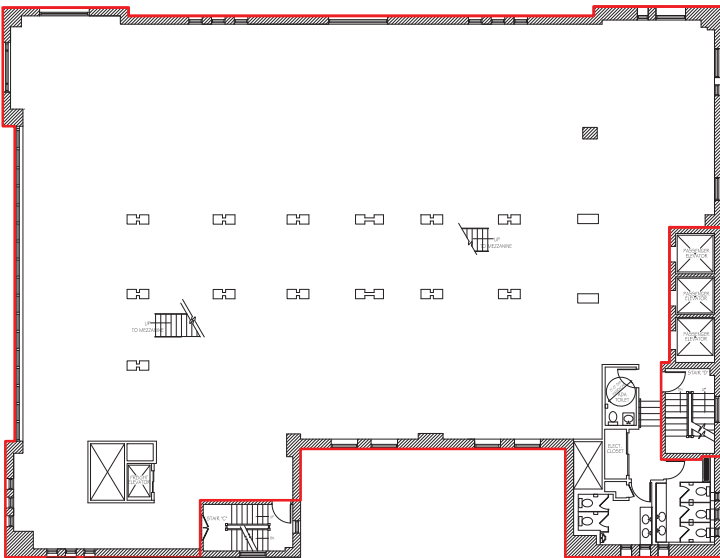
THOR EQUITIES

FLOOR PLANS

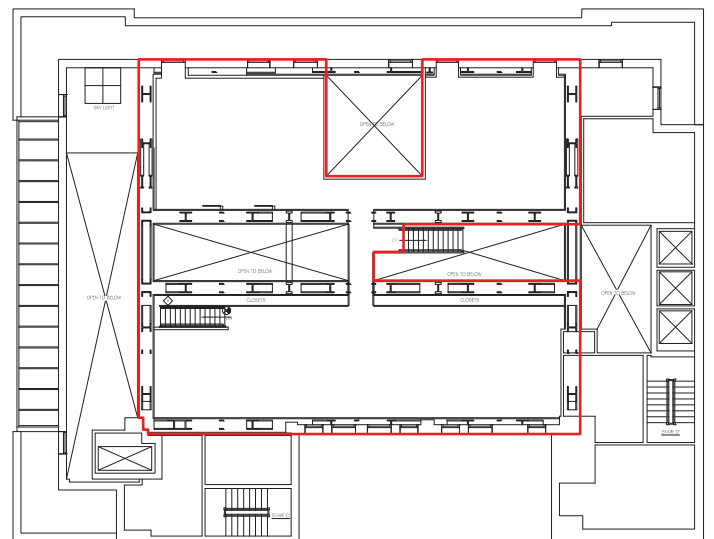
5TH FLOOR



14TH FLOOR



14TH FLOOR



MEZZANINE

ABOUT THE PROPERTY

FEATURES

- Large windows
- Tenant controlled A/C
- Owner occupied
- 24/7 access, with full time concierge
- Walking distance to Grand Central Terminal, Port Authority and Penn Station
- Convenient to all 42nd Street Subway Stations
- One block away from Bryant Park



5TH FLOOR

FLOOR:	ENTIRE 5 TH FLOOR
AREA:	13,400 RSF
CEILING HEIGHT:	17'
POSSESSION:	60 DAYS
TERM:	3-10 YEARS
ASKING RENT:	UPON REQUEST

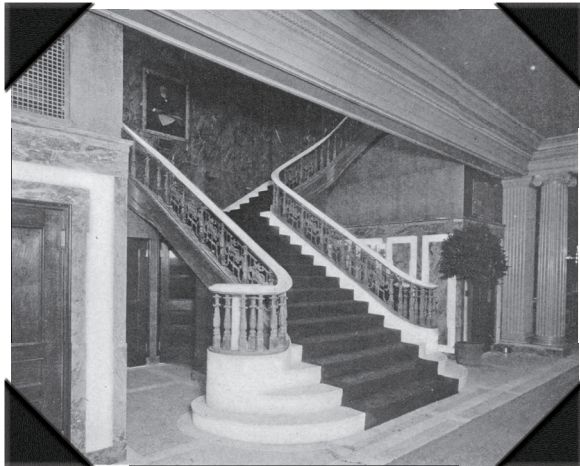
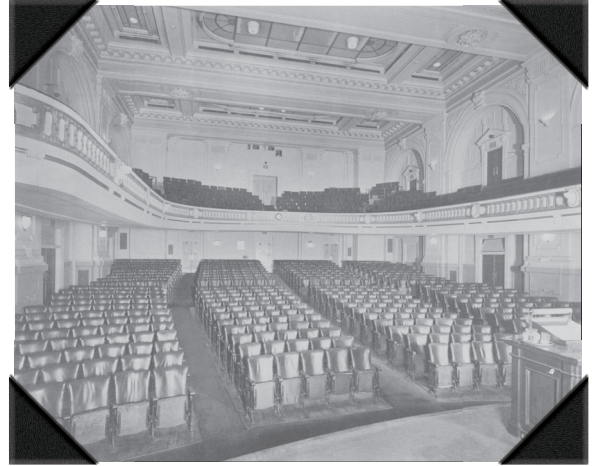


14TH FLOOR

FLOOR:	ENTIRE 14 TH FLOOR
AREA:	17,909 RSF
CEILING HEIGHT:	17'
POSSESSION:	IMMEDIATE
TERM:	3-10 YEARS
ASKING RENT:	UPON REQUEST



A HISTORICAL LANDMARK



Although all information furnished regarding property for sale, rental or financing is from sources deemed reliable, such information has not been verified, and no express representation is made nor is any to be implied as to the accuracy thereof and it is submitted subject to error, omissions, change of price, rental or other conditions, prior sale, lease or financing, or withdrawal without notice.

FOR MORE INFORMATION, PLEASE CONTACT:
ADAM RAPPAPORT VICE PRESIDENT, OFFICE LEASING
(212) 432-3030 | ARAPPAPORT@THOREQUITIES.COM