

124 W. 24TH STREET

CHELSEA



THOR
EQUITIES

WWW.THOREQUITIES.COM



FEATURES

TOTAL SF	11,000 SF
GROUND FLOOR:	5,500 SF
LOWER LEVEL:	5,500 SF

FRONTAGE	
W. 24TH STREET	50'

HIGHLIGHTS

- TYPE: RETAIL
- TOTAL SF: 11,000 SF
- MARKET: CHELSEA

ABOUT THIS PROPERTY

UNPARALLELED LOCATION: Located in Chelsea – a diverse hub of fashion, culture and entertainment – 124 W. 24th St. is bordered by the popular High Line, Chelsea Market, Greenwich Village and Meatpacking District.

HIGH-DENSITY TRADE AREA: Long regarded as one of New York City's prime residential areas and a center of the art world, Chelsea has more recently experienced an influx of technology companies including Google and Twitter as well as numerous startups. Chelsea is also home to many newer condominiums and hotel developments.

EXCELLENT RETAIL OPPORTUNITY: This location offers plentiful space for retailers. The ground floor has 5,500 SF with 50 feet of frontage on West 24th Street, and the lower level measures 5,000 SF. With this amount of usable retail space in one of the most established neighborhoods on the west side of Manhattan, 124 W. 24th St. is the ideal property for the right tenant.

124 W. 24TH STREET

CHELSEA



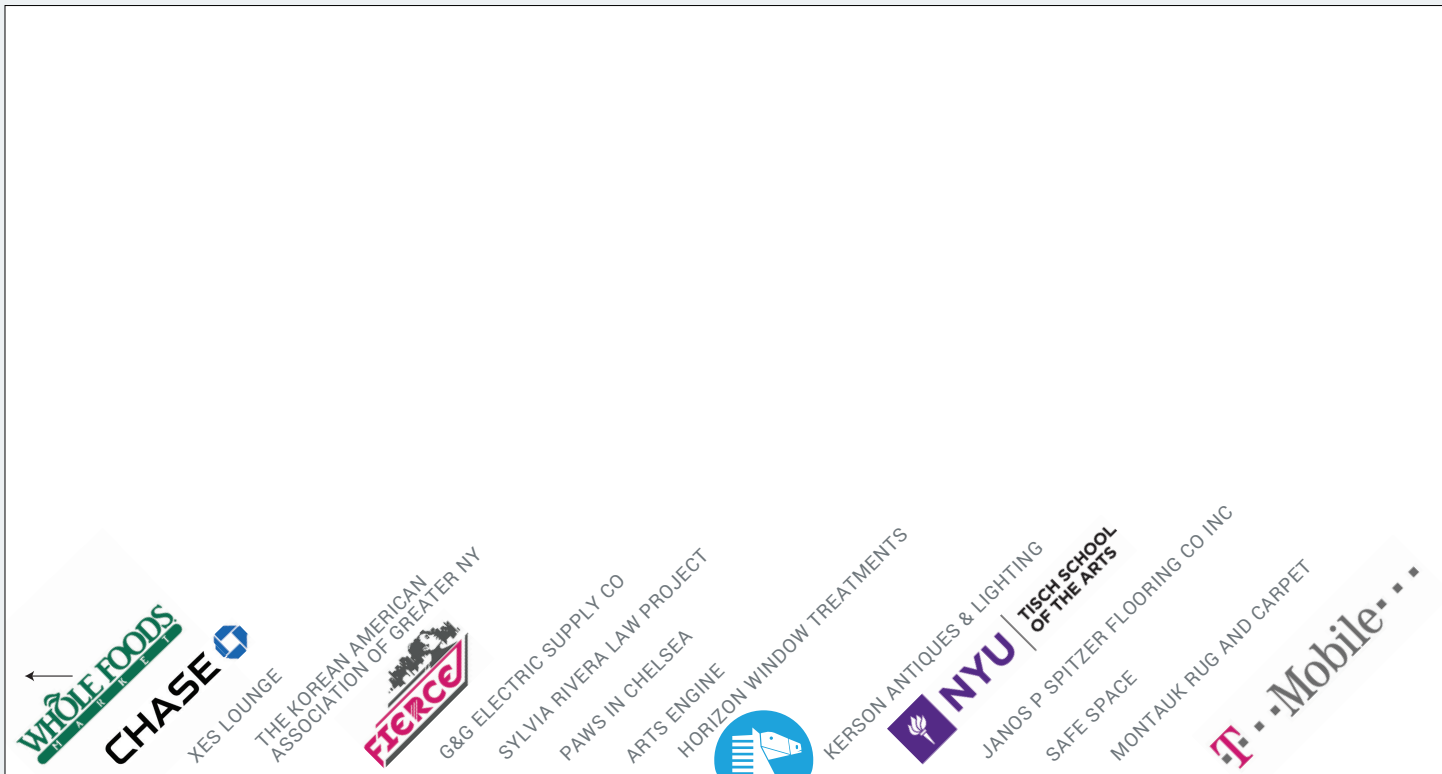
THOR
EQUITIES
WWW.THOREQUITIES.COM

W 25TH STREET

W 25TH STREET

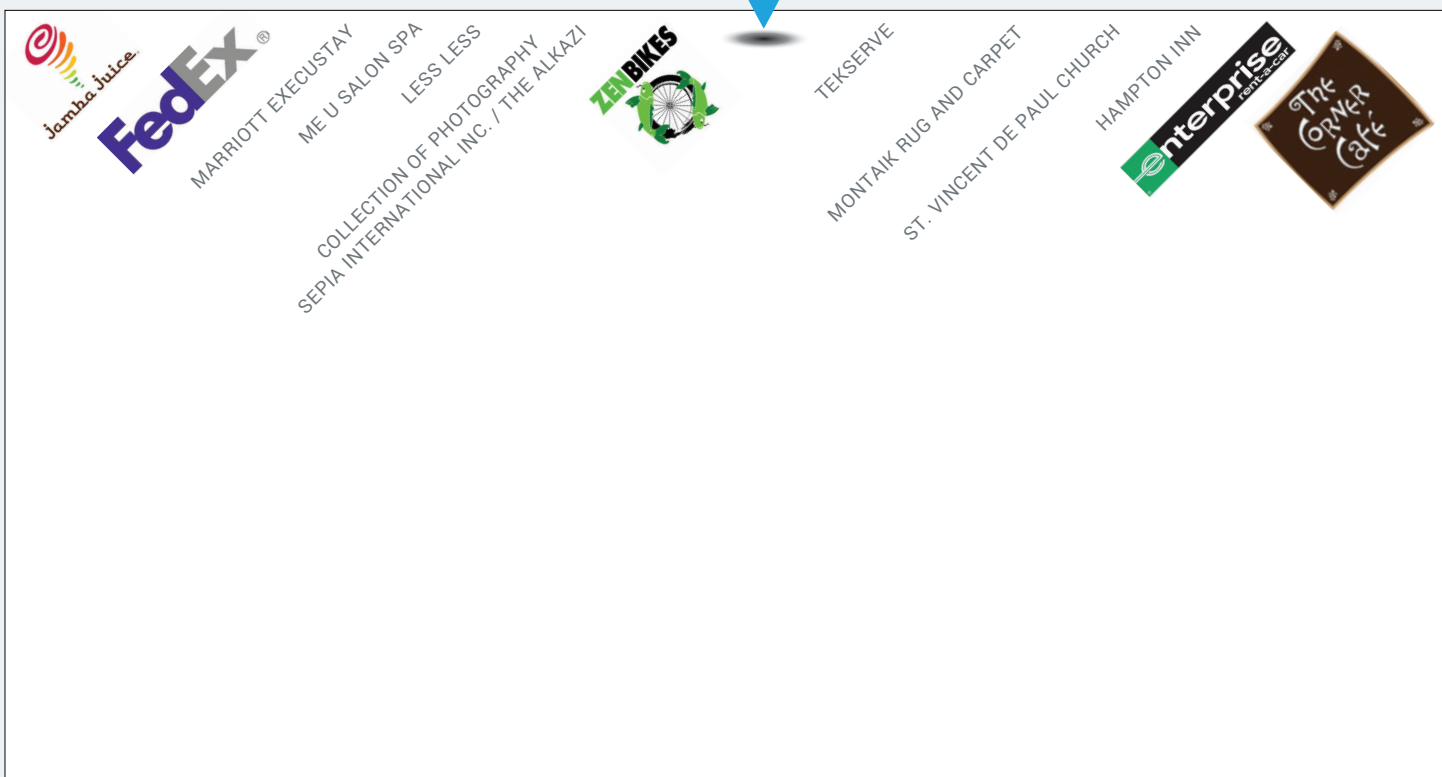
SEVENTH AVENUE

SIXTH AVENUE



W 24TH STREET

W 24TH STREET

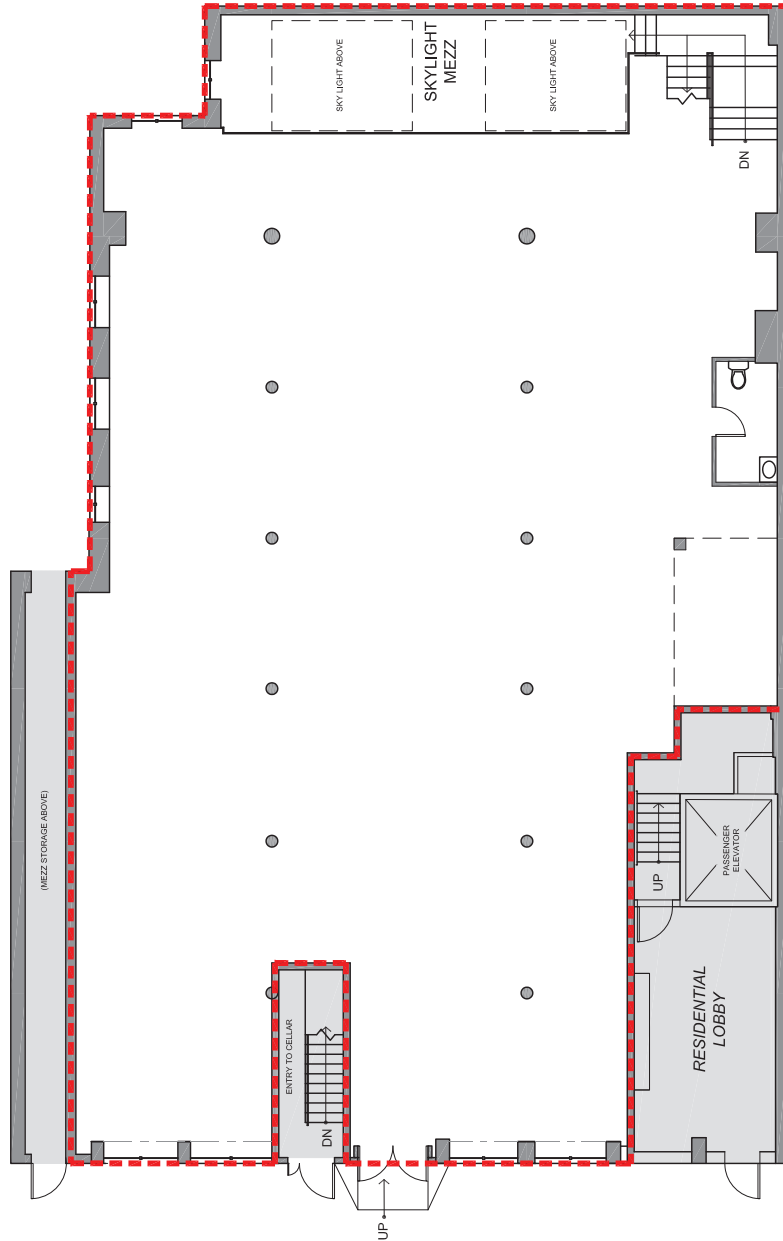


W 23RD STREET

W 23RD STREET

124 W. 24TH STREET

CHELSEA

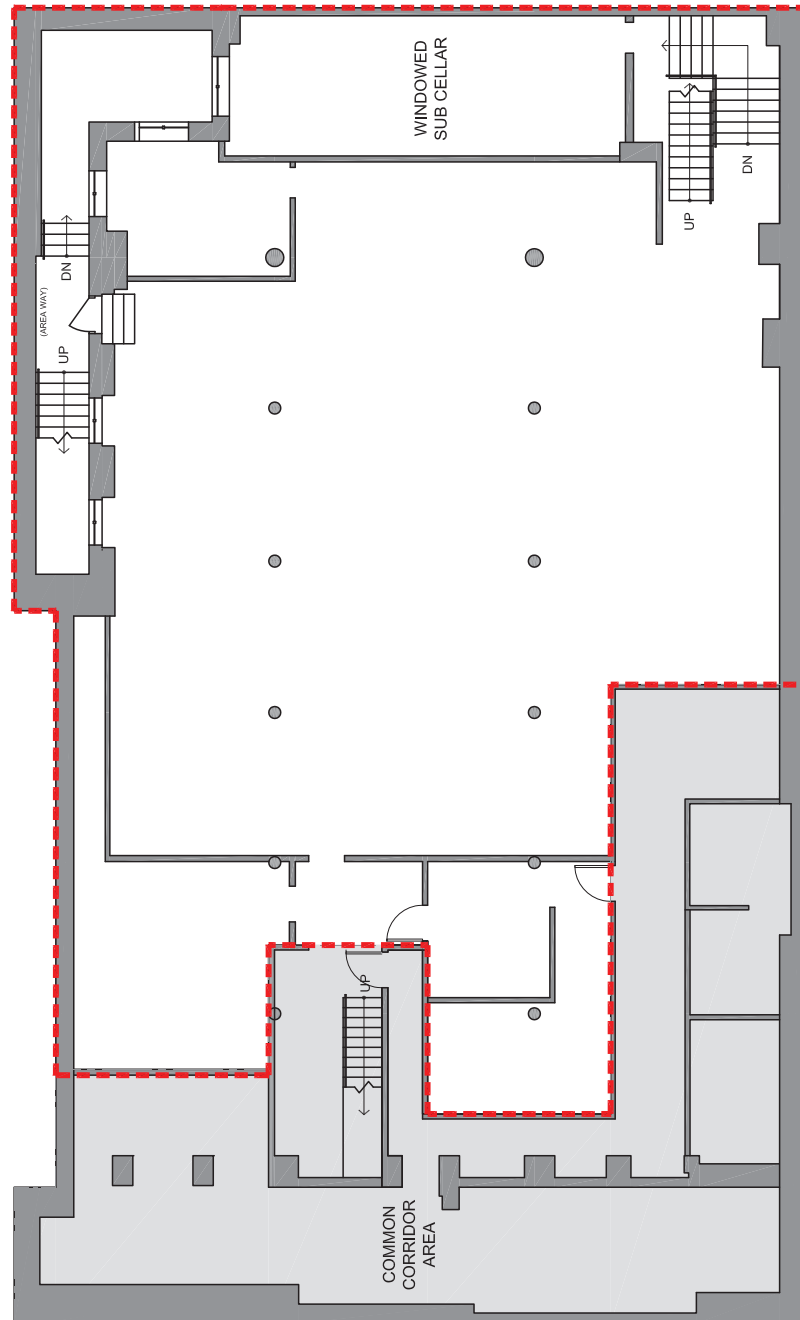


W. 24TH STREET

GROUND FLOOR

124 W. 24TH STREET

CHELSEA



LOWER LEVEL

Although all information furnished regarding this property is from sources deemed reliable, such information has not been verified, and no express representation is made nor is any to be implied as to the accuracy thereof and it is submitted subject to error, omissions, change of price, rental or other conditions, prior sale, lease or financing, or withdrawal without notice.